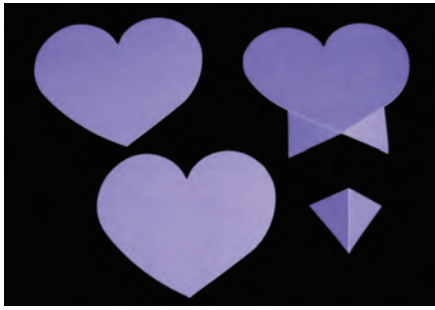
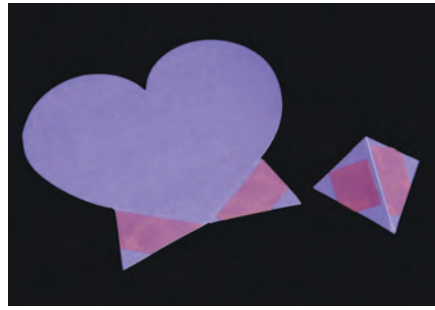


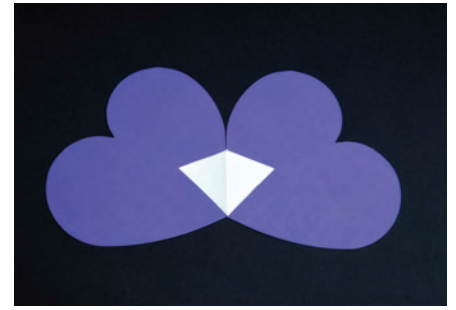
656026 Card, Heart,3D



1. Die-cut shapes from material of choice, cutting the plain Heart twice. Fold on all crease lines.



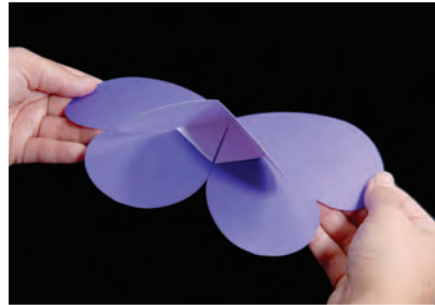
2. Place adhesive on the small connector piece—up to but not crossing the fold—and place adhesive on the tabs of the pop-up Heart, with the side of the Heart that you will be displaying facing up.



3. Adhere the plain hearts to the small connector piece with the longest corner of the connector at the bottom.



4. Align the right tab of the pop-up Heart with the center crease and adhere.



5. Adhere the left side in the same fashion.



6. Card is ready to embellish.



7. Pop-up Heart may also be used inside another card. Use double-sided tape on the outside of the Heart card. Align the fold of the Heart card with the fold of the outer card and close together firmly.



Multiple cards may be linked together to form a cute mini album or a fun party favor. Have fun making your own beautiful creations!