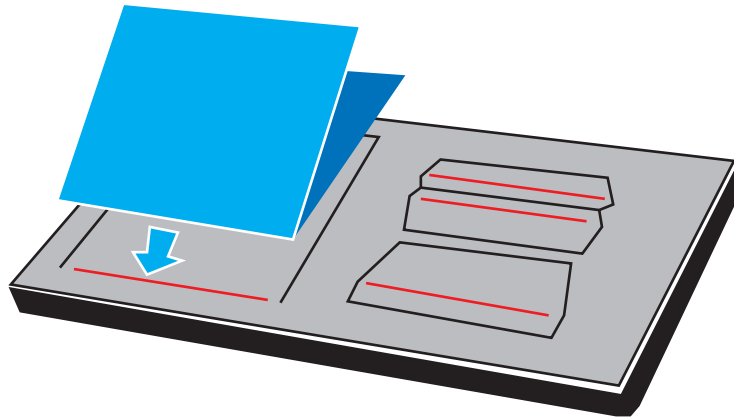
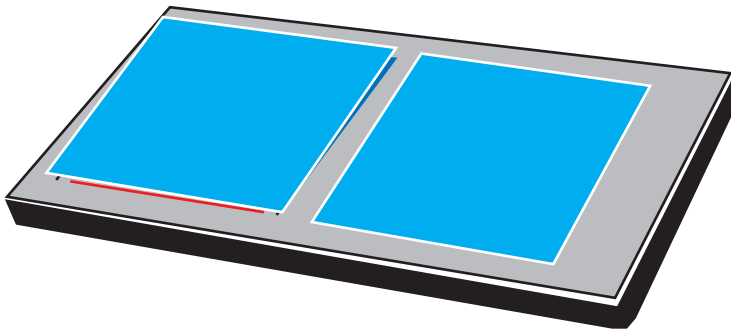


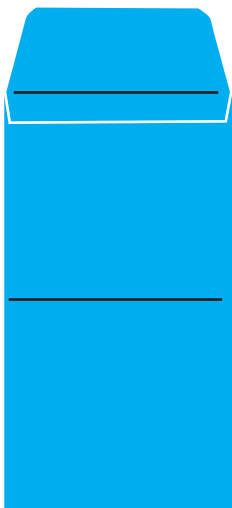
# 656249 Sizzix® Bigz™ XL Die - Envelope, CD



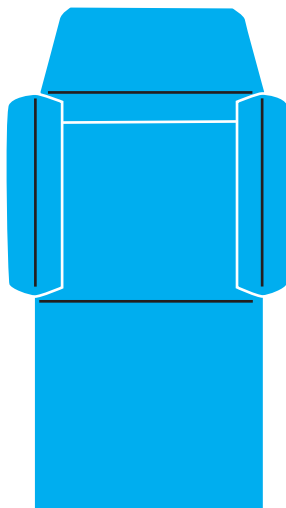
1. Use a folded piece of paper large enough to cover the large square on the die. Align the folded edge of the paper with the crease rule (red).



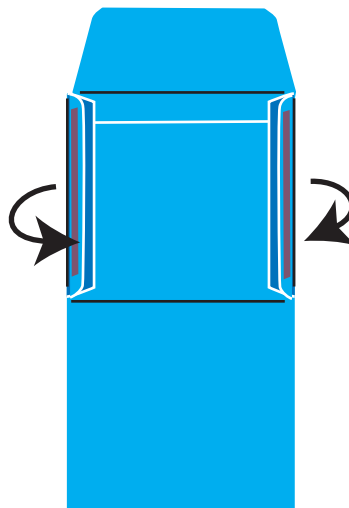
2. Place a single sheet of paper over the side tabs and top flap. Make your sandwich with your cutting pad and crease pad and roll through machine.



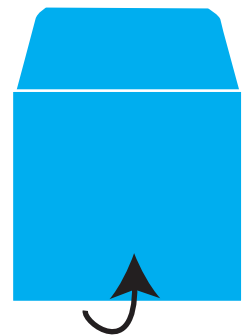
Adhere top flap.



Adhere Side Tabs.



Fold tabs inward  
place adhesive on tabs.



Fold front of the envelope  
up and adhere to tabs.