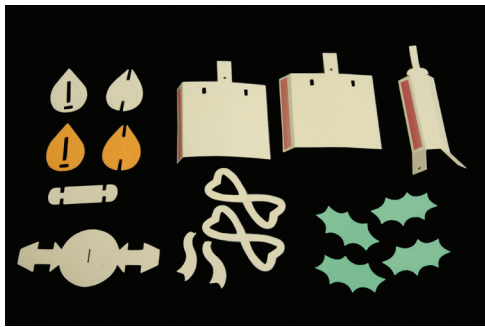
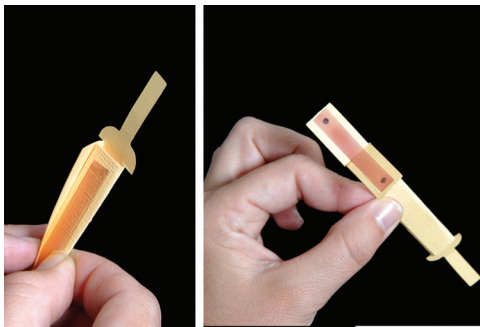


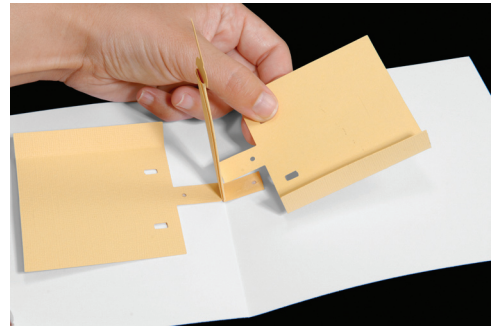
Instructions



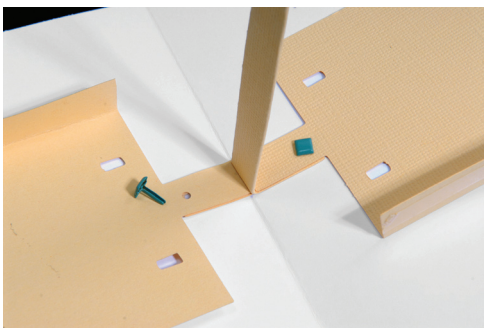
1. Die-cut, fold and add adhesive as shown.



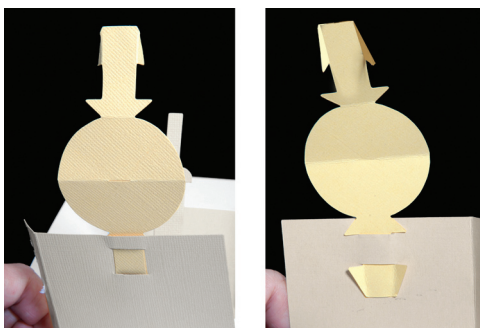
2. Create the center of the Candle by folding in the two sides and adhering them, one to the other. Fold out the two bottom flaps in opposite directions and add adhesive.



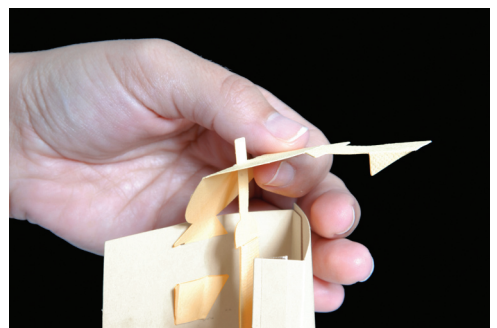
3. Attach the center piece so that the bottom flaps straddle the center fold of the card. With adhesive, attach the two side pieces so that the holes in the tabs line up with those in the center piece flaps.



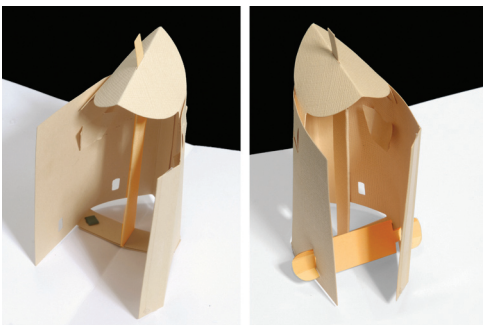
4. Punch a hole through the tabs and card and insert small brads for extra support.



5. Attach the Candle top by folding over the tabs on both of the flaps and attaching the first side as shown. The image on the left is the outside of the candle. The image on the right is how the flap looks from the inside with the tabs unfolded.



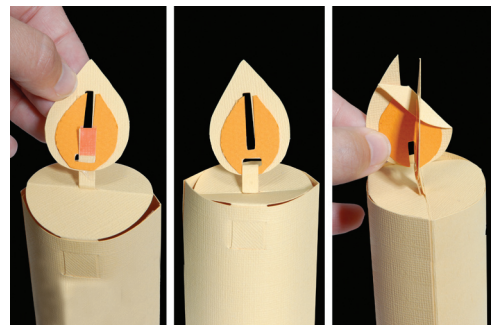
6. Before attaching the other side of the Candle top, insert the wick of the Candle center up through the slot in the middle of the Candle top.



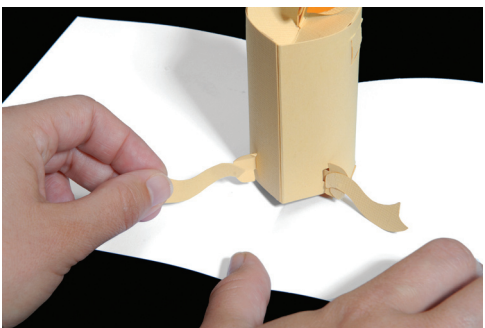
7. Attach the remaining Candle top flap to the other side (left). If you plan to add the Bow or Holly embellishments, insert the embellishment base flaps into the slots at the bottom of each side. You can now adhere the two sides of the Candle together.



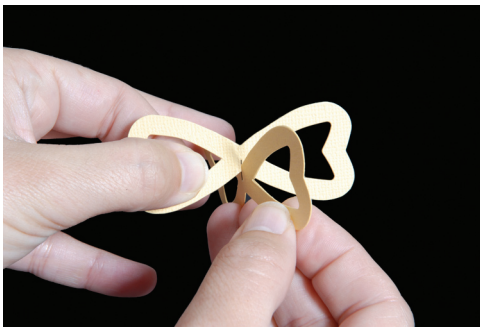
8. Embellish the flame by cutting out the center portions from a contrasting color and adhere as shown. This can be done on both the front and back of both flame pieces if desired.



9. To attach the flame, slide the wick end through the bottom of the slotted flame piece. Fold the wick over and attach it to itself. Fold the notched flame piece along the crease and insert it into the slotted flame piece as shown. Fit the notch at the bottom first before sliding the top of the flame through.



10. Attach the Bow ends or Holly to the embellishment base flaps.



11. The Bow has a small slit at the center. Create a double Bow by sliding two Bow slots into each other.



12. Complete the candle by attaching the Bow or Holly as desired.