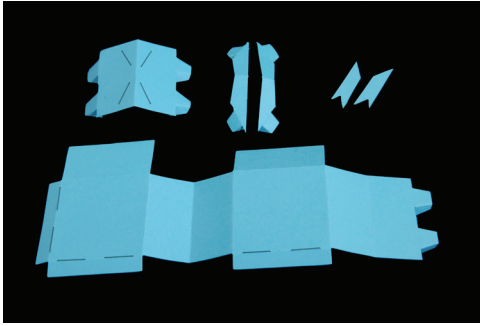
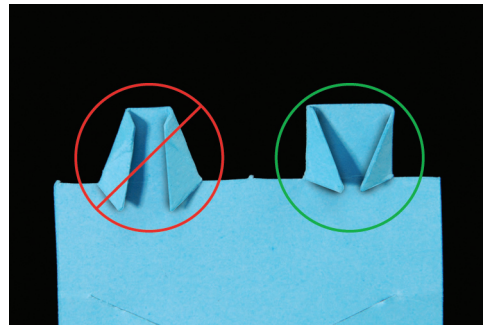


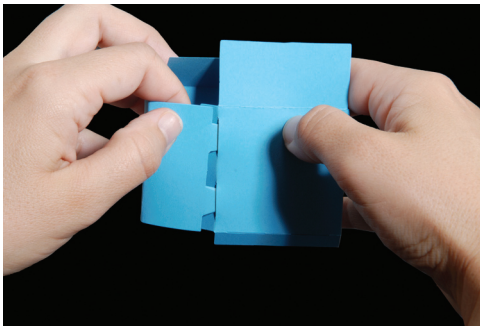
Instructions



1. Die-cut and fold as shown.



2. When folding the locking tabs on the flaps, keep the fold perpendicular to the end of the flap. This will make it easier to open the locking tabs after they have been inserted into the slot.



3. Create the body of the Gift box by inserting the tab end into the slotted end. Open locking tabs to hold the side in place.



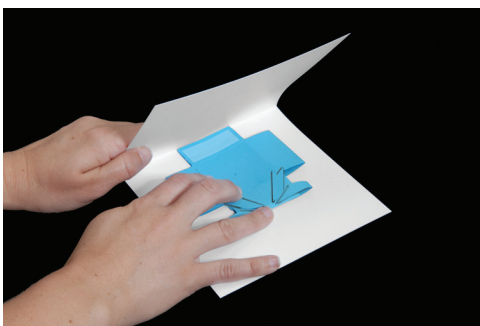
4. Attach the two bow sides by sliding the flaps through the slits on the top piece. Open the locking tabs to hold them in place.



5. Attach the top to the body of the Gift box.



6. Adhere the bow ends to the top of the box.



7. With the box folded flat, adhere the bottom flaps of the Gift box to the card. The bottom of the flaps should fit right into the center fold of the card.



8. Embellish as desired.