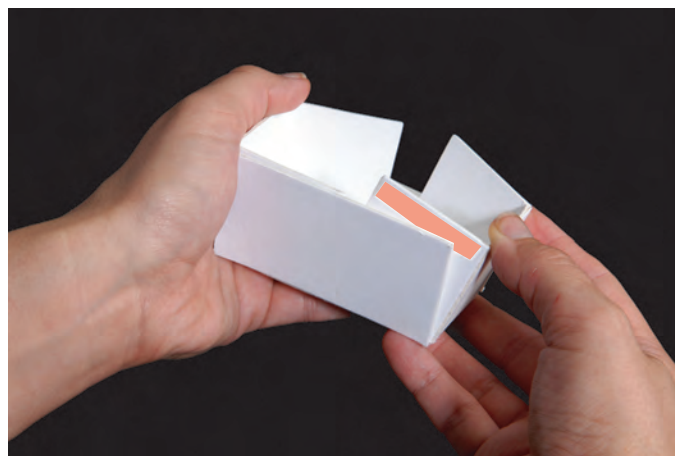


656548 Sizzix® ScoreBoards™ XL Die - Box, Rectangle by Eileen Hull



1. Die-cut Box from mat board or chip-board. Fold all score lines and apply adhesive as shown.



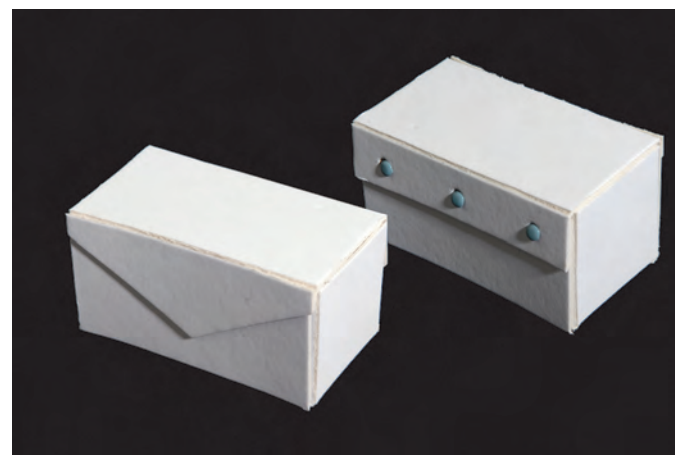
2. Fold up the sides so that the edges of the tab with adhesive line up with the top edge of the front flap.



3. Using three small brads, attach the lid of the Box to the back of the Box.



4. For a little extra strength to the hinge side, you may wish to add another strip of adhesive to the vertical edges of the back.



4. Use magnets or ribbon to keep the Box lid closed.