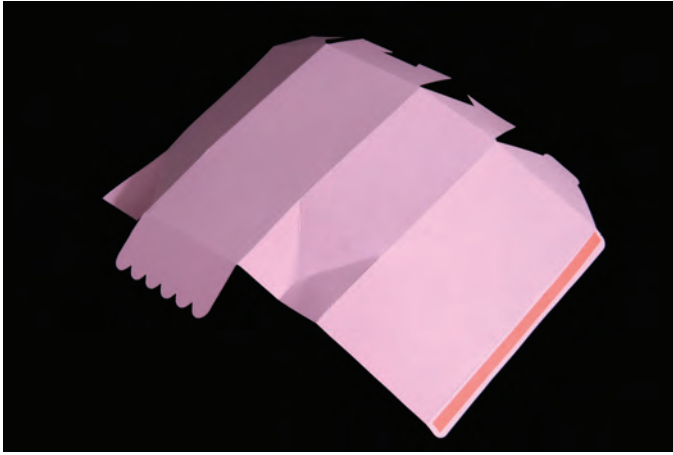


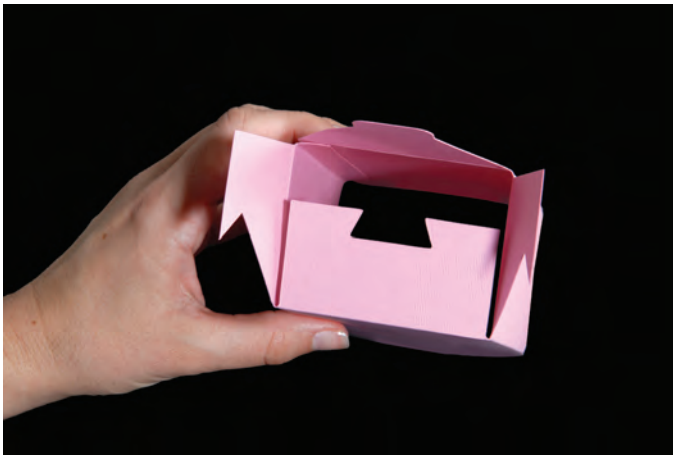
656600 Sizzix® Bigz™ Pro Die - Box, Tall w/Scallop Flap



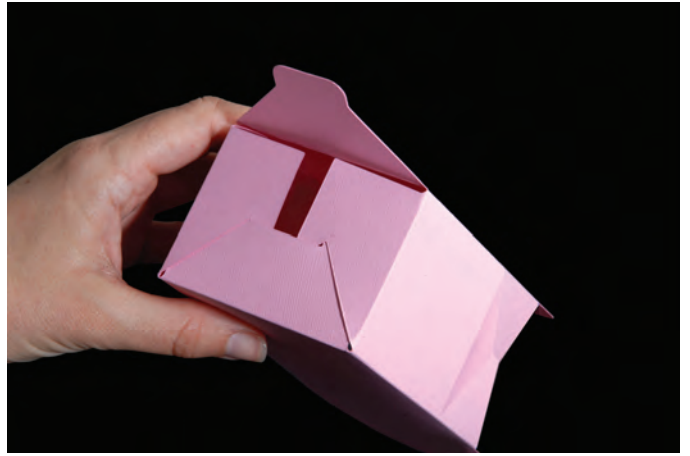
1. Die-cut Box from desired material. Add adhesive as shown.



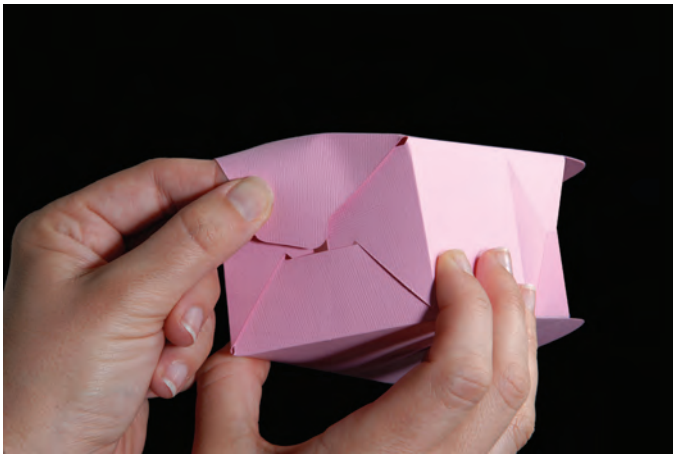
2. Adhere the long tab to the opposite edge. The tab should be on the inside of the Box.



3. To close the bottom, fold the U-shaped bottom flap in first.



4. Fold the boot-shaped side tabs in and lock the toe of the boot behind the U-shaped flap.



5. Slide the final flap under the U-shaped flap to complete the bottom of the Box.



5. Gather the top of the Box together like a milk carton. Fold and adhere the Scallop Flap.