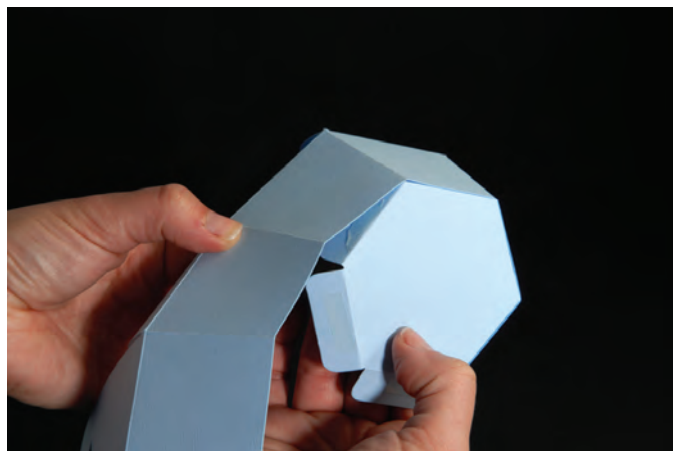


656829 Sizzix® Bigz™ Pro Die - Box, Hexagon by E.L. Smith



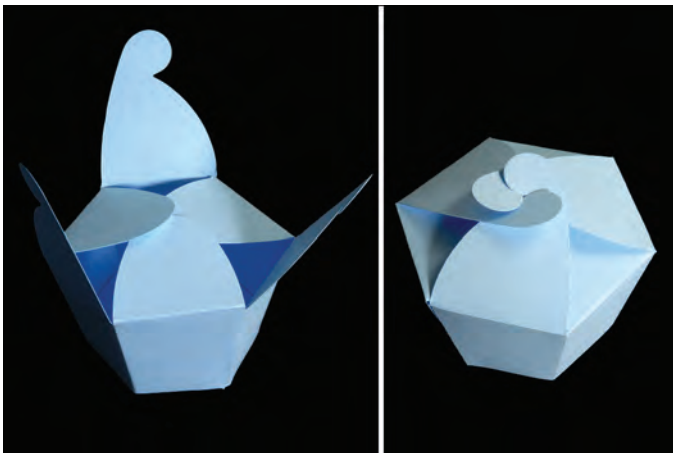
1. Die-cut Box, fold along crease lines and place adhesive as shown.



2. Attach bottom to body of Box one tab at a time.



3. Adhere the open side to the side flap.



4. Close Box by folding in the rounded flaps first, then overlap the interlocking flaps.