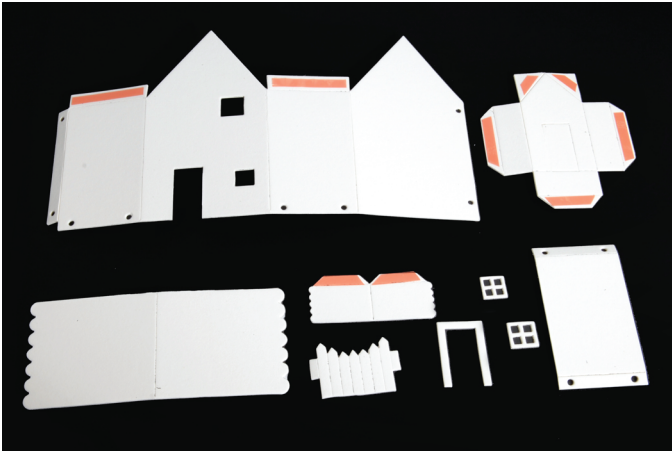
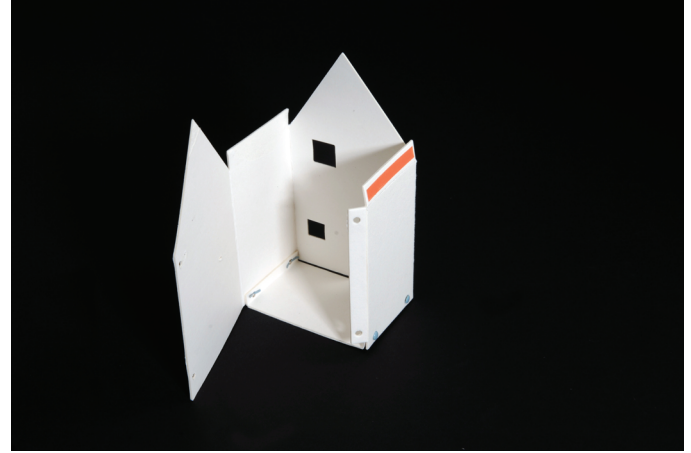


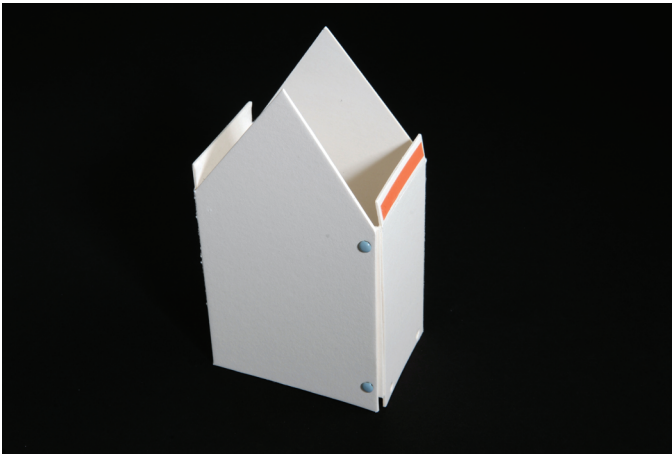
656836 Sizzix® ScoreBoards™ Pro Die - House, 3-D by Eileen Hull



1. Die-cut pieces, fold along crease lines and place adhesive as shown.



2. Attach bottom using brads.



3. Close back of House and secure with brads.



4. Add front module. You can cut and build more than one module for a single house and add them to front, back or sides to create larger and differently shaped houses.



5. Attach Main roof and accessories. Longer fences can be created by cutting multiple sections of fence. You may choose to trim off one tab on each fence section when doing so.