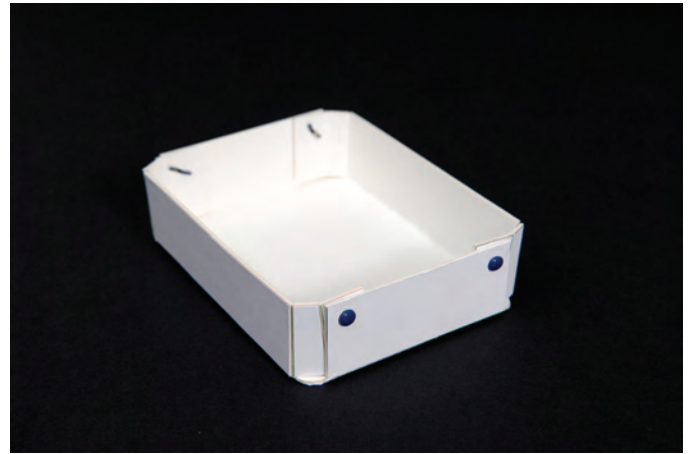


# 657124 Sizzix® ScoreBoards™ XL Die - Bag, Suitcase by Eileen Hull



1. Die-cut material of choice, fold and apply adhesive as shown. The piece on the top right is the lid. The piece on the bottom right is the closure flap. The lid flap should be folded over all the way while the closure flap should be only lightly folded.



2. Use brads to secure corners and create the body of the Suitcase.



3. Fold the lid flap all the way.



4. Place the lid over the opening of the Bag and slide into position. Adhere the flap.



5. Attach the closure flap at the top of the lid. Leave approximately twice the thickness of the material being used between the hinge of the flap and the top edge of the lid. The lightly folded tab will press against the inside of the Bag to keep it closed.



6. Attach handle and embellish as desired.