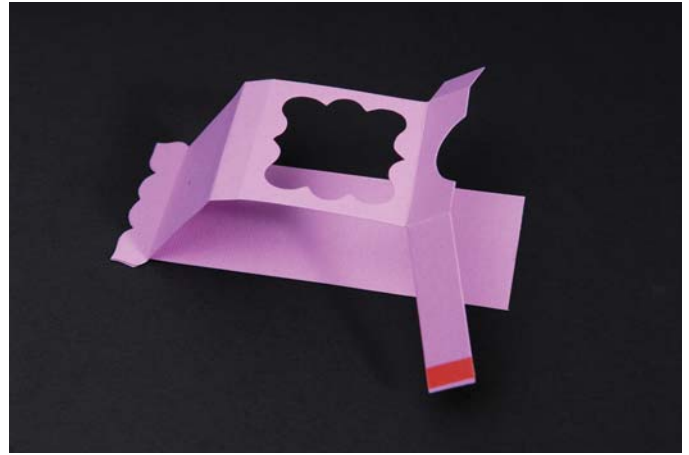


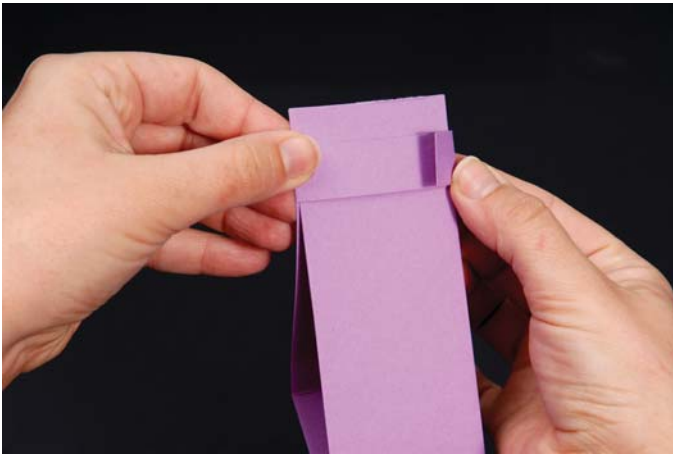
657136 Bigz™ XL Pull Tag, Scallop 3-D (Pop-Up) by Karen Burniston



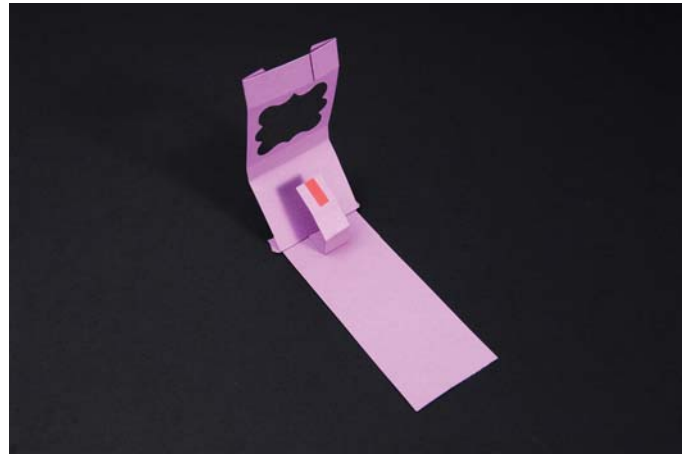
1. Die-cut, fold and apply strong adhesive as shown.



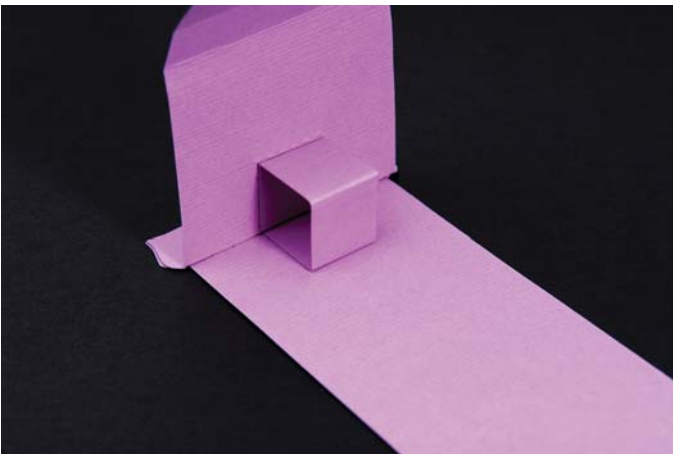
2. Place the frame over the base so the top edges line up and adhere the two parts together.



3. Fold the two bottom tabs to the back and adhere the short tab over the long tab, creating a sleeve.



4. Lift the framed Tag all the way open and attach an end panel of the pop-up strip in the middle of the base, with the end butted up against the crease.



5. Fold the pop-up strip into a box and attach the other end panel to the framed Tag so the two ends of the strip meet at the fold between the frame piece and the base.

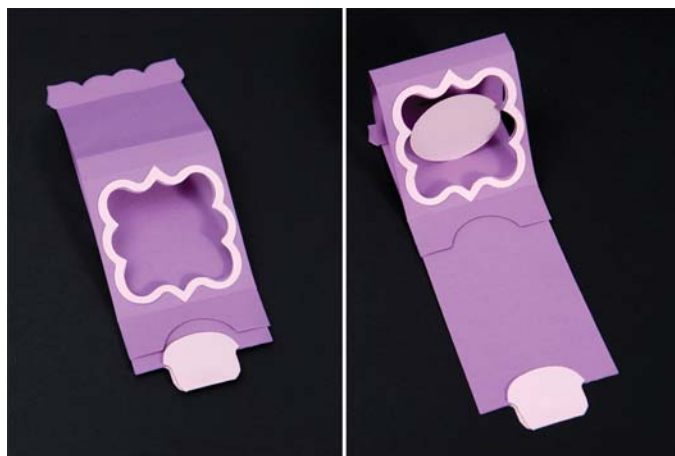


6. Attach the pop-up embellishment and the pull-tab. The pull-tab folds over the end of the base with the points on either side aligned with the edge of the base piece.

657136 Bigz™ XL Pull Tag, Scallop 3-D (Pop-Up) by Karen Burniston



7. Slide the tab through the sleeve on the frame.



8. The embellishment is revealed by pulling on the pull-tab until the base slides through the sleeve. When fully open, the embellished pop-up will stand vertically within the slanted frame.



9. To attach your Pull Tag to a project, place a strong adhesive on the underside of the sleeve and adhere it to the project. Base piece should slide smoothly through the sleeve when pulled.