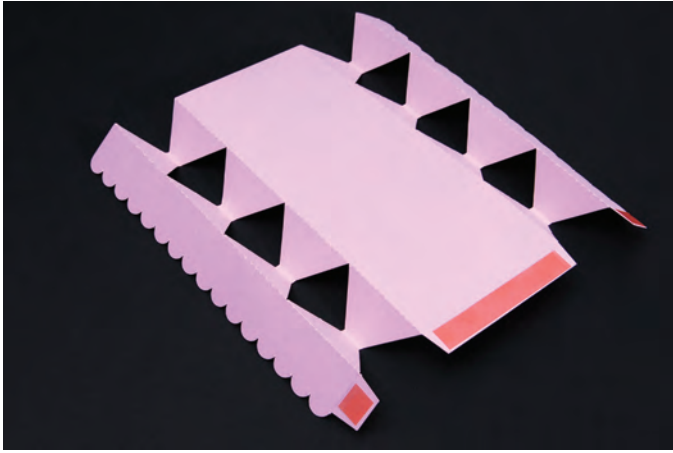
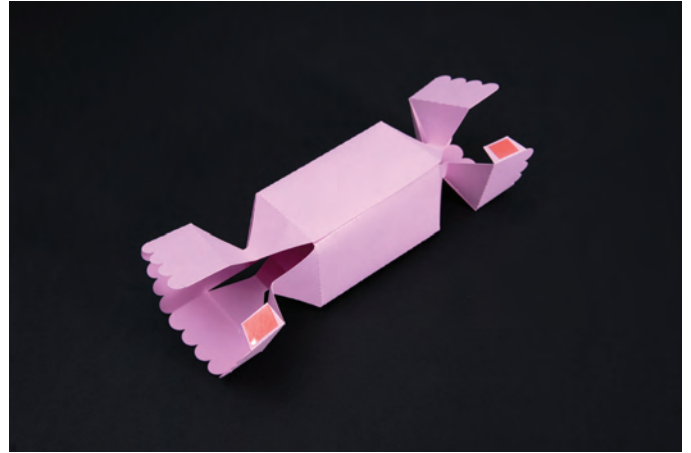


## 657158 Sizzix® Bigz™ Pro Die - Box, Candy-Shaped



1. Die-cut from chosen material. Fold and apply adhesive as shown.



2. Fold each segment until a box shape is formed. Attach the long flap first to create the body of the Box.



3. Attach the two small tabs as shown and use a string or ribbon to gather and secure the inner folds.