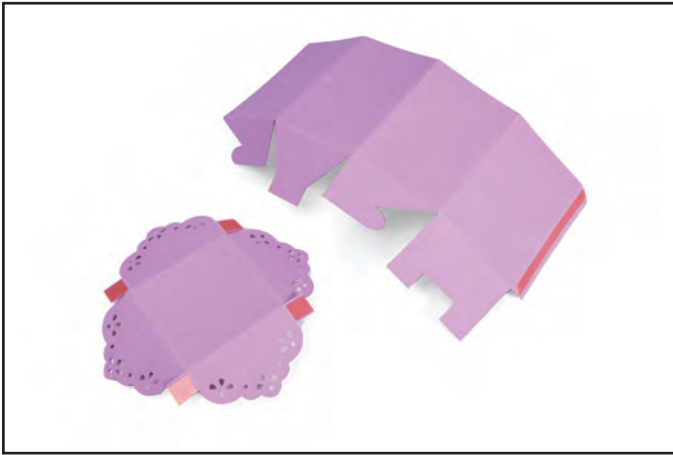


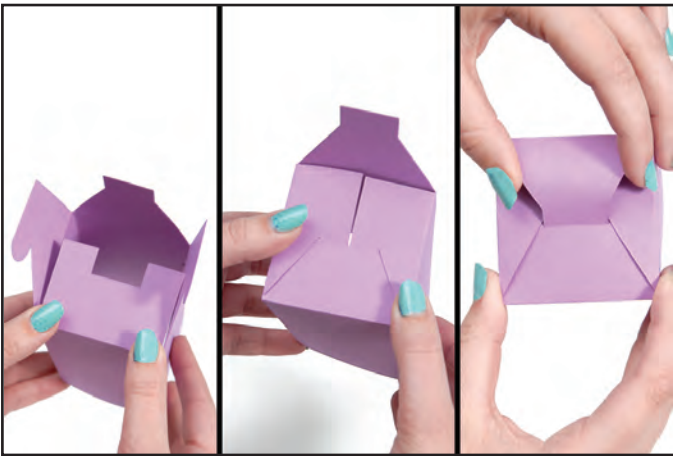
657329 Sizzix® Bigz™ Pro Die - Box w/Scallop Lid #2 by Lynda Kanase



1. Die-cut pieces and apply adhesive as shown.



2. Create the body of the Box by adhering the long tab to the opposite side.



3. Fold down the U-shaped flap. Fold the side flaps and insert the tabs into the center of the U-shaped flap. Insert the final flap as shown.



4. Create the top of the Box by adhering the tabs to the adjacent flap.



5. Embellish as desired.