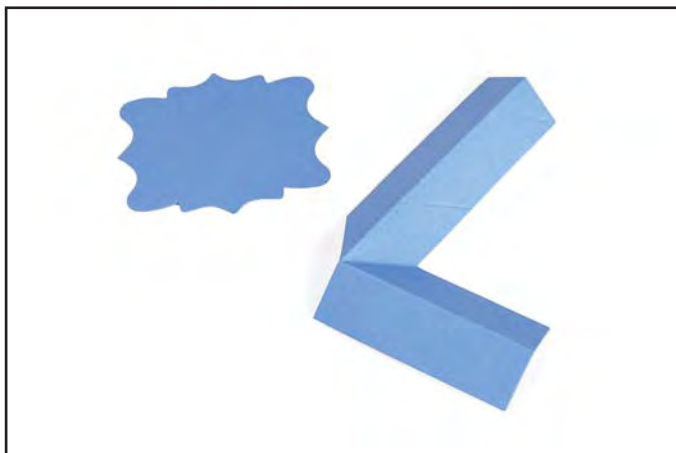
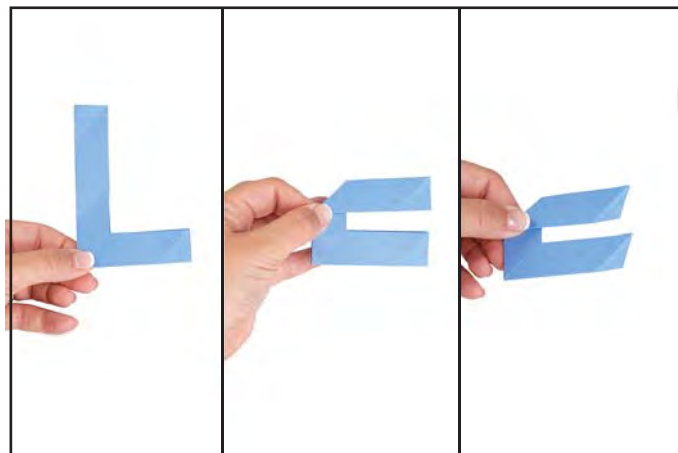


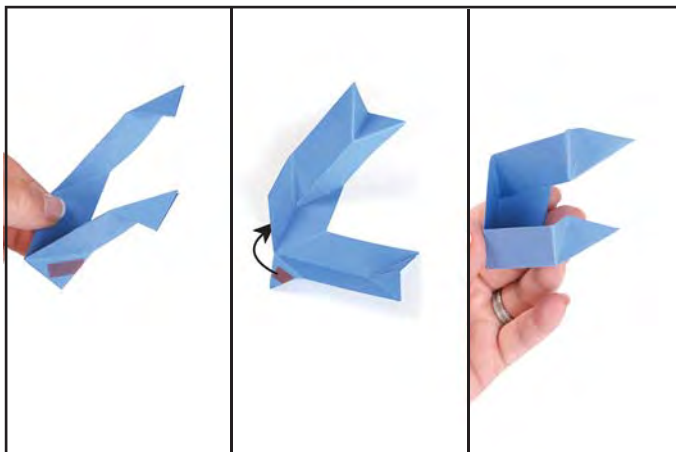
## 658042 Sizzix® Bigz™ Die - Platform, Raising 3-D (Pop-up) by Karen Burniston



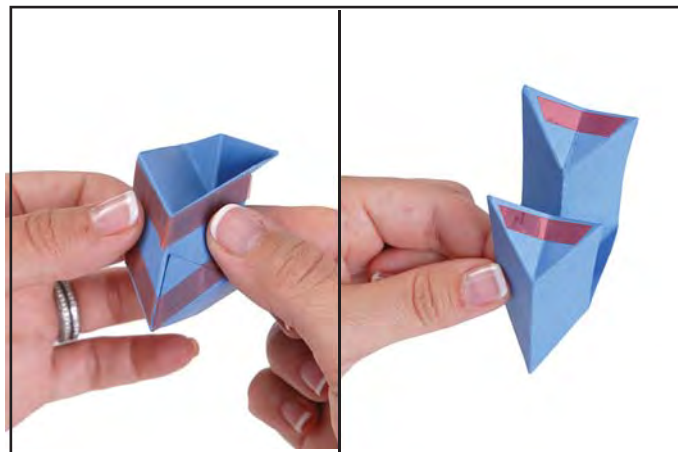
1. Die-cut and fold the raising mechanism along the center fold as shown.



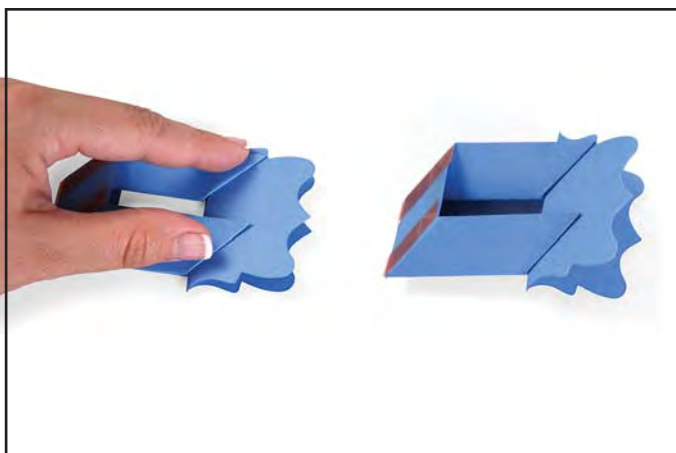
2. To train the diagonal folds, fold the “L” shape along the center folds so it looks like an “L”. Fold the top of the “L” over so that it is parallel with the bottom of the “L”. Fold the diagonals at the ends as shown.



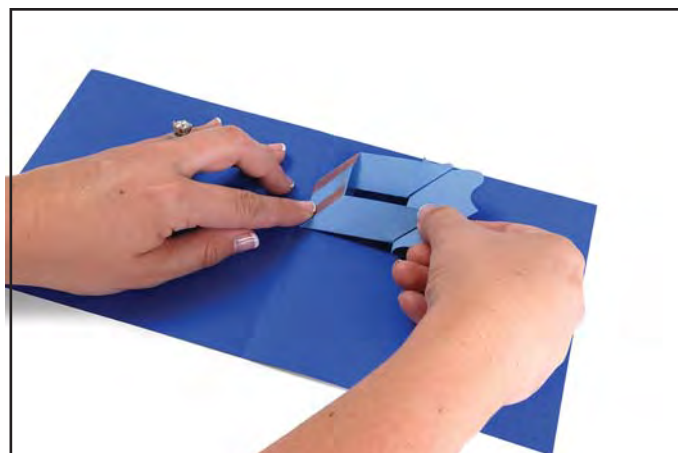
3. Fold out the tab on the heel of the “L” and apply a strong adhesive. Refold as shown in the center image, then adhere the tab behind what was once the vertical portion of the “L”.



4. Apply adhesive to the large chevron shaped area on the back of the raising mechanism and the two triangular shapes at the front.



5. Fold the label shape and adhere it to the two front triangles of the raising mechanism.



6. Align and adhere the base of the raising mechanism to the inside of a card at the fold line. Be sure to keep it within the boundary of the closed card.

## 658042 Sizzix® Bigz™ Die - Platform, Raising 3-D (Pop-up) by Karen Burniston



7. Finish adhering the the Raising Platform to the inside of the card by exposing the adhesive and closing the card.



8. Opening the card causes the platform to raise. There are endless uses for this little platform. Experiment and enjoy.