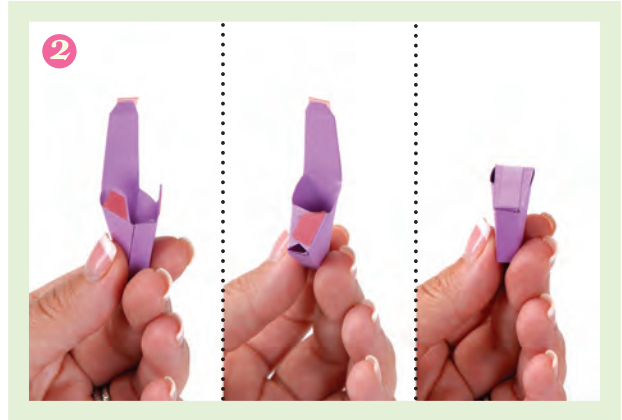


# 658346 Sizzix® Bigz™ L - Ballroom Slippers



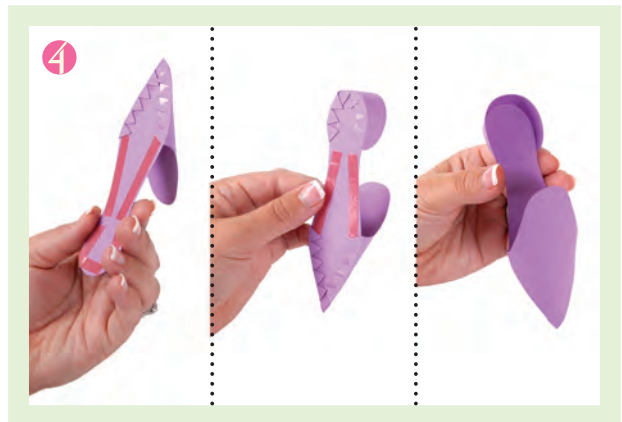
1. Die-cut material and apply adhesive as shown.



2. Create heel of shoe by first creating a cone. Fold side tabs inward. Fold top flap over and insert tab into the top of the heel.



3. Attach heel to the sole (large shoe silhouette).



4. Attach toe and heel to the upper shoe (small shoe silhouette) as shown.



5. Adhere the upper shoe to the sole.