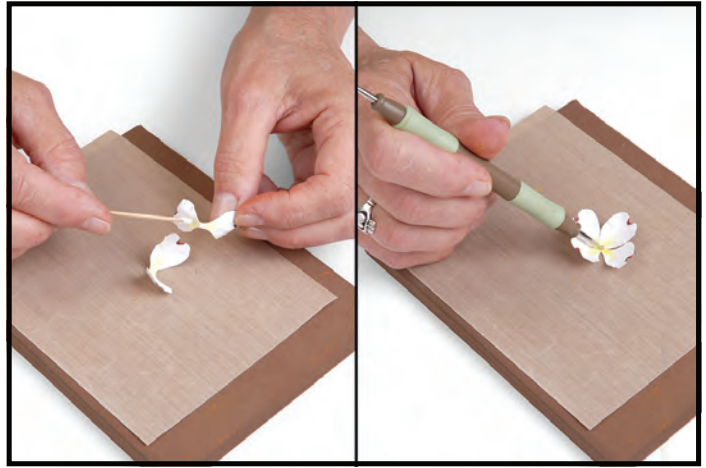


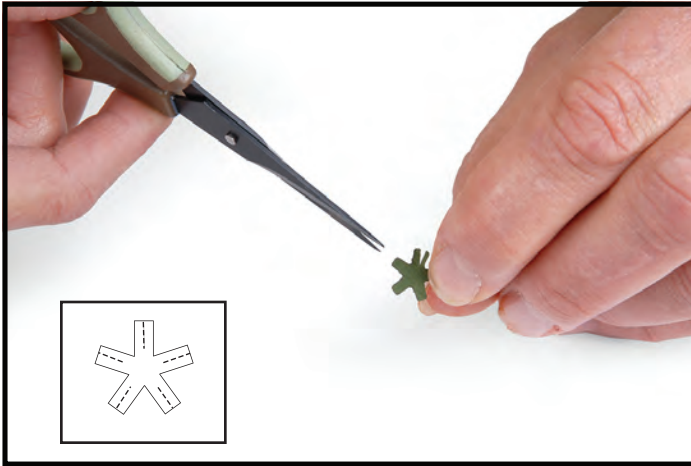
658405 Sizzix® Thinlits™ Die - Flower, Dogwood by Susan Tierney-Cockburn



1. Die-cut the Dogwood petals from cream or pink cardstock. **Shape** the petals to add dimension and use Copic® marker R59 or R57 to add color to the end of the petals. Use Pan Pastels™ to add light green shading to the center of the petals. Die-cut leaves from green cardstock.



2. Apply a small amount of glue with a toothpick to the underside center of one petal. Place perpendicular on top of the other petal.



3. Snip each end of the stamen down about 1/4" (see inset). Place stamen on the molding pad and, using the small ball stylus, **cup** the shape. Pick up the stamen and pinch the ends even tighter, using thumb and index finger.



4. Adhere the stamen to the center of the Flower. Separate and arrange stamen ends.



5. Adhere the Flowers to a branch of paper-covered wire.



6. Use Viva Decor Paper Pen (color #703) to add the "bracts" to the ends of the stamen.

658405 Sizzix® Thinlits™ Die - Flower, Dogwood by Susan Tierney-Cockburn



7. **Stem** and **vein** and the leaves on the leaf pad, then **pinch** stem end and **bend** leaf. Dip the stem end into glue, tuck underneath the Flowers and adhere.