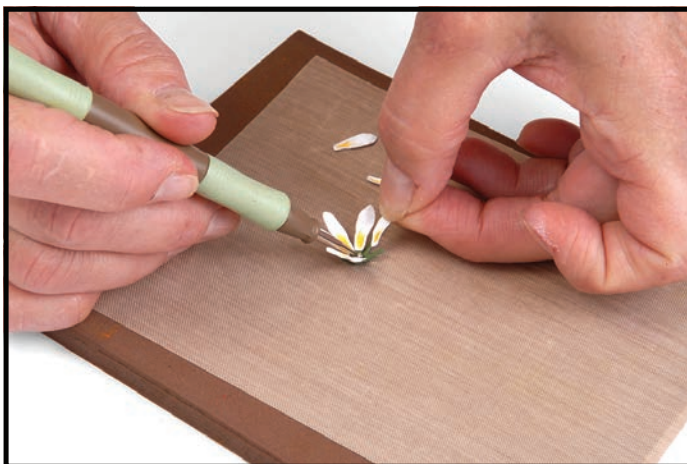


658407 Sizzix® Thinlits™ Die - Flower, Mini Daisy by Susan Tierney Cockburn



1. Die-cut petals from white or light cream cardstock. Die-cut the calyx (Flower base) and leaves from green. Apply Pan Pastel™ color toward the stem end of the petals. **Shape, pinch and bend** each petal.



2. **Form** the calyx into a cup. Add the petals by dipping the ends lightly into glue and adhere one to each "arm" of the calyx.



3. Apply a small dot of color to the center of the flower using Viva Decor Paper Pen (color #201), then sprinkle with a little Woodland Scenics™ Pollen.



4. **Stem, vein and bend** the leaves. Tuck leaves underneath the Flower and adhere.



5. Mini multiple layered flowers such as the Black-Eyed Susan and the Sunflower can be created by selecting appropriate colors and layering petals.