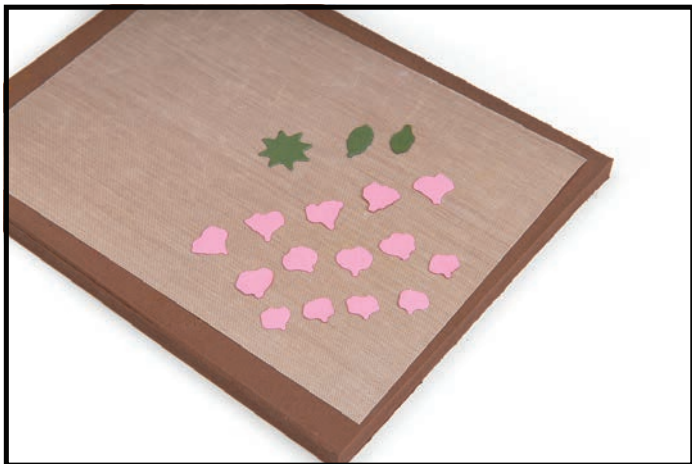


658408 Sizzix® Thinlits™ Die - Flower, Mini Petals by Susan Tierney-Cockburn



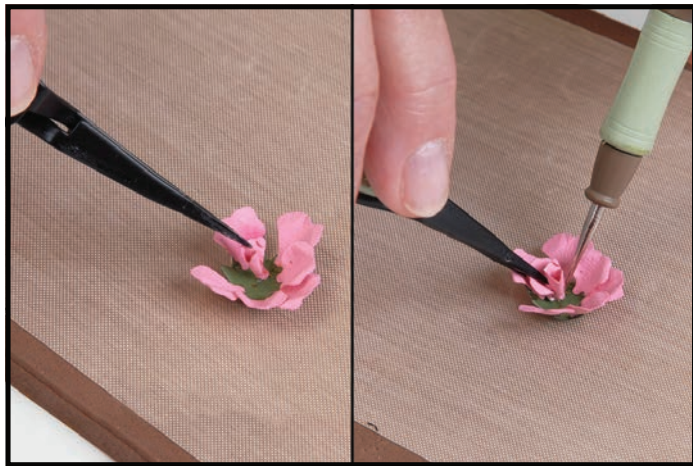
1. Die-cut Petals from colored cardstock and leaves and calyx (Flower base) from green cardstock. Shading may be applied using Pan Pastels™ if desired.



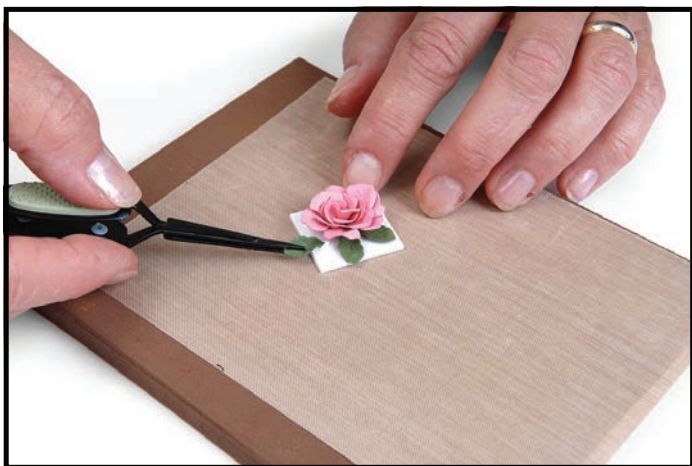
2. **Shape, pinch and bend** Petals to create dimension. **Form** the calyx into a cup. Dip stem ends of Petals into glue and adhere to calyx. Use larger Petals for the outer layer, offsetting each petal.



3. **Roll** a Petal to form the center of the bud. Secure the end with a small dab of glue.



4. Adhere rolled Petal to the center of the calyx with a dab of glue and allow to dry.



5. Complete the blossom by filling in with smaller Petals next to the bud and larger Petals moving outward. **Stem, vein and bend** the leaves, then tuck them underneath the Flower and adhere.