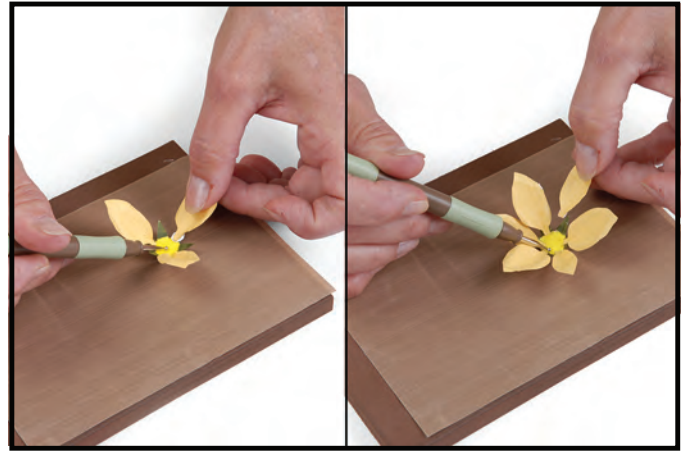


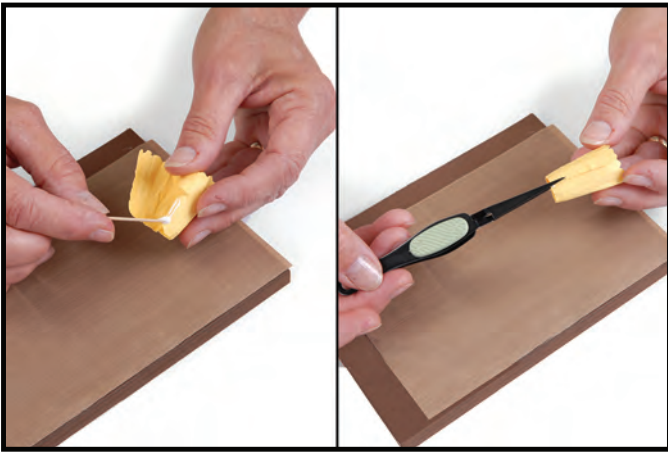
658414 Sizzix® Thinlits™ Die - Flower, Daffodil by Susan Tierney-Cockburn



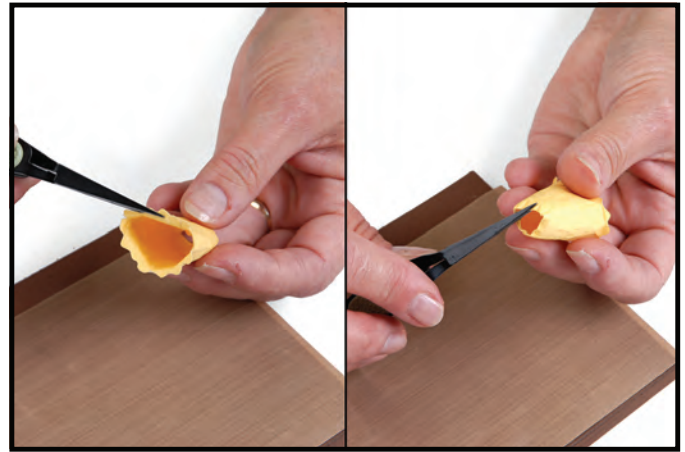
1. Die-cut all pieces of the Daffodil. **Shape, pinch** and **bend** the six petals (three in each size). Die-cut the stamen from light yellow cardstock and die-cut the leaves and calyx (Flower base) from medium green cardstock.



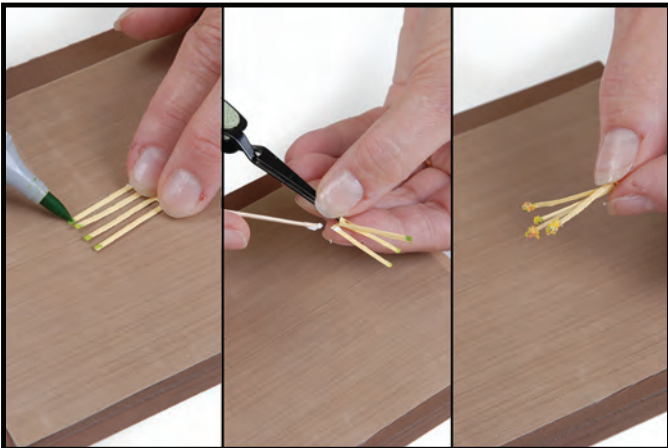
2. **Stir** the calyx into a cup shape. Dip the stem ends of the petals in glue. Adhere the three large petals to the calyx, leaving a space between each. Place the the small petals on the remaining arms of the calyx.



3. **Shape** the corona. Apply a small amount of glue to the tab on the edge of the corona. Adhere the tab to its opposite edge and allow to dry.



4. **Bend** the top edge of the corona outward and the base of the corona inward.



5. Color the tips of the stamen with a green Copic® marker. **Roll** the stamen and seal with a dot of glue. Fan out the stamen and lightly dip ends into the glue. Dip the glued ends into Woodland Scenics™ Pollen.



6. Dip the base of the corona in glue and adhere to the center of the Flower. Dip the base of the stamen in glue and adhere it to the calyx in the center of the corona.

658414 Sizzix® Thinlits™ Die - Flower, Daffodil by Susan Tierney-Cockburn



7. Place the leaves on the leaf pad, right side down. Use the leaf tool to **stem**, then turn right side up and add striations (vertical **lines** on either side of the stem line). **Pinch** and **bend** leaves. Dip in glue and tuck stem end under the Flower and adhere. (Daffodil leaves do not have veins.)