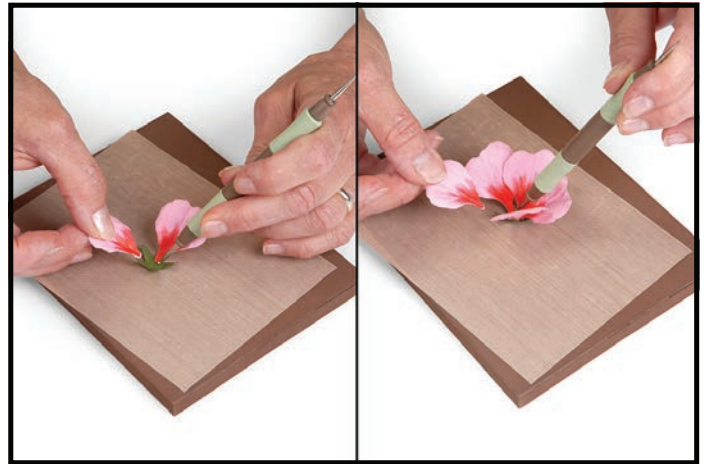


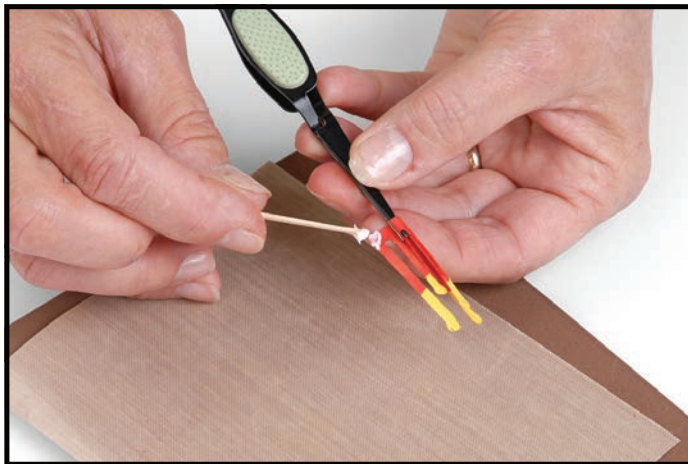
658415 Sizzix® Thinlits™ Die - Flower, Hibiscus by Susan Tierney-Cockburn



1. Die-cut petals from colored cardstock. Die-cut the leaves and calyx (Flower base) from medium or dark green cardstock and the stamen from yellow cardstock. Use a Copic® marker and Fan Pastels™ to add color to the petals and the stamen. **Shape, pinch and bend** petals to add dimension.



2. **Stir** the calyx into a cup. Dip stem end of petals into glue and place one on each of the calyx "arms." Place in Plastic Flower Pot to dry (see image step 4).



3. **Roll** the stamen. Apply glue to the end and seal. Fan out the loose stamen ends. Fan out the stamen and lightly dip ends into the glue, then into Woodland Scenics™ Pollen.



4. Dip bottom of stamen into the glue and adhere to the center of the Flower. To add more detail to the stamen, apply a few small dots with Viva Decor Paper Pen (color #201 or #402).



5. **Stem, vein, pinch and bend** leaves. Tuck under Flower and adhere.