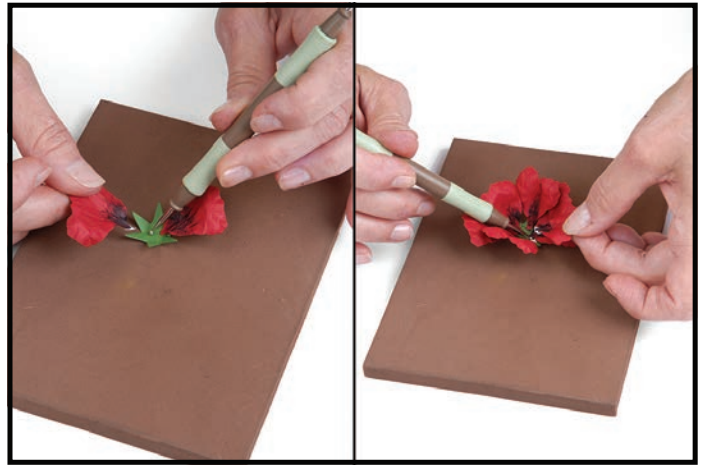


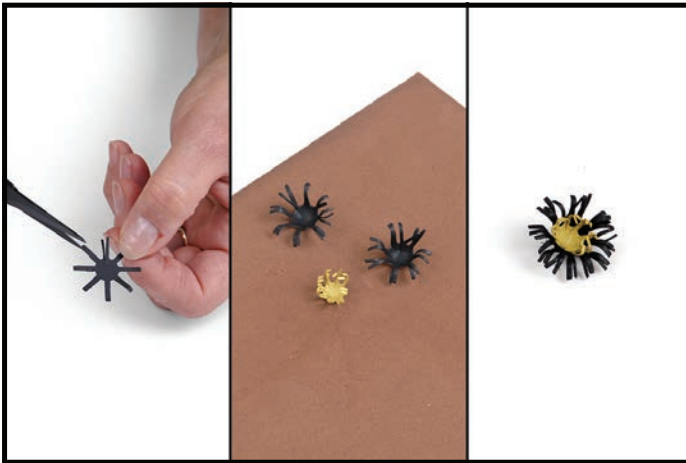
658415 Sizzix® Thinlits™ Die - Flower, Poppy by Susan Tierney-Cockburn



1. Die-cut all pieces from cardstock, cutting six petals total. Use Pan Pastels™ to shade the petals. **Shape, pinch and bend** each petal to give dimension.



2. **Stir** the calyx into a cup. Dip stem ends of petals into glue and adhere to each "arm" of the calyx. Start with the two largest petals on opposite ends, then medium petals opposite each other and finally the remaining small petals.



3. Snip the projections of the two large stamen pieces and the one small stamen piece in half. **Stir** or **cup** the stamens, then use tweezers to **bend** the ends of the large stamen pieces outward and the small stamen piece inward. Use glue to adhere all three stamen pieces together as shown.



4. Use a toothpick to apply a small amount of glue to the bottom of the three-part stamen and adhere to the center of the Flower. Use the toothpick to lightly apply glue to the ends of the stamen, then sprinkle with Woodland Scenics™ Pollen. To create the "seed" in the center, use Viva Decor Paper Pen (color #703 or #402).



5. **Stem, vein, pinch and bend** the leaves. Tuck underneath Flower and adhere.