

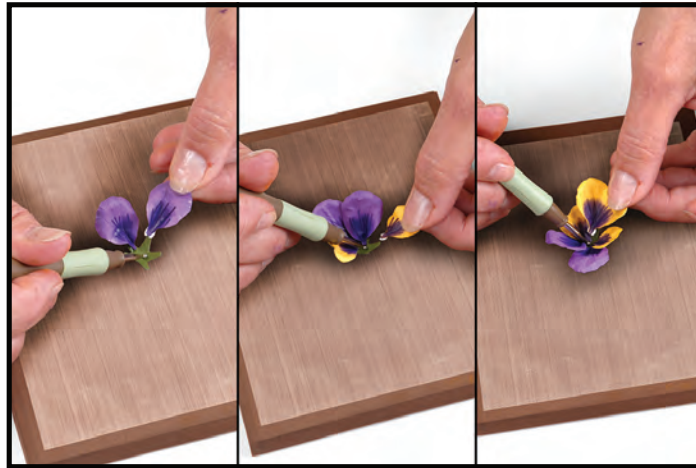
# 658419 Flower, Pansy/Violet by Susan Tierney-Cockburn



1. For a Pansy, die-cut larger petals from colored cardstock. Die-cut larger leaves and calyx (Flower base) from green cardstock. Shade petals with Pan Pastels™ and Copic® markers. **Shape, pinch and bend** them to give dimension.



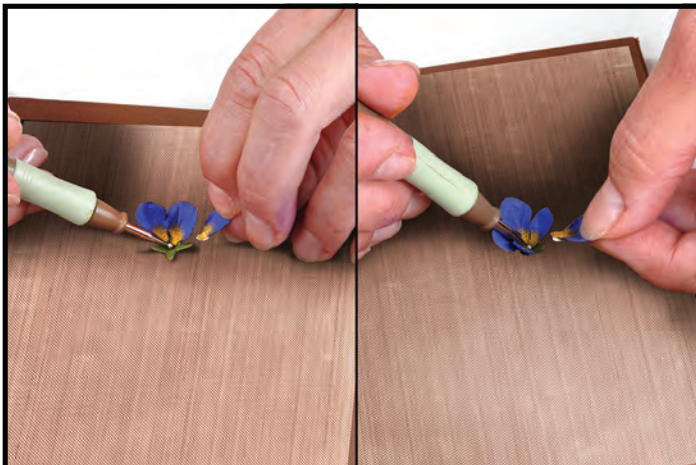
2. For a Violet, die-cut smaller petals from colored cardstock. Die-cut smaller leaves and calyx from green cardstock. Shade petals with Pan Pastels and Copic markers and **shape, pinch and bend** them to give dimension.



3. For the Pansy, **cup** the calyx. Dip stem ends of petals into glue and adhere the two purple petals (back petals) next to each other. Glue the two smaller yellow petals (side petals) next to the purple, one on each side. Glue the large yellow petal (front petal) on the remaining arm of the calyx.



4. Let dry in Plastic Flower Pot.



5. For the Violet, **cup** the calyx. Dip ends of petals into glue and adhere to each of the "arms" of the calyx.



6. Add a small dab of color using Viva Decor Paper Pen (color #201) to the center of the Flower to recreate the detail of a pansy.

## 658419 Flower, Pansy/Violet by Susan Tierney-Cockburn



7. **Stem, vein, pinch** and **bend** each leaf. Tuck under Flower and adhere.