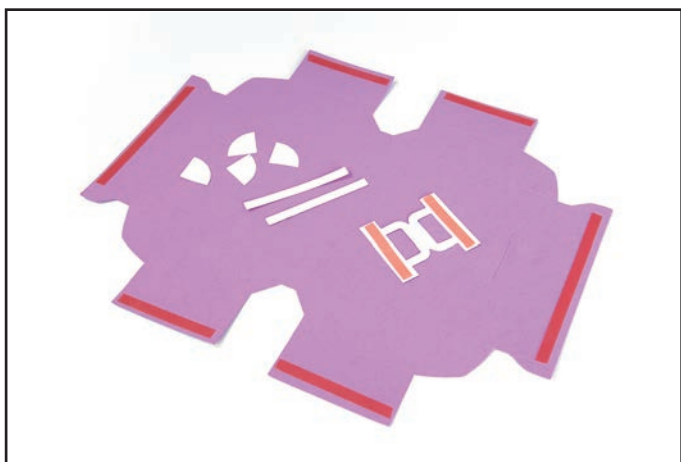
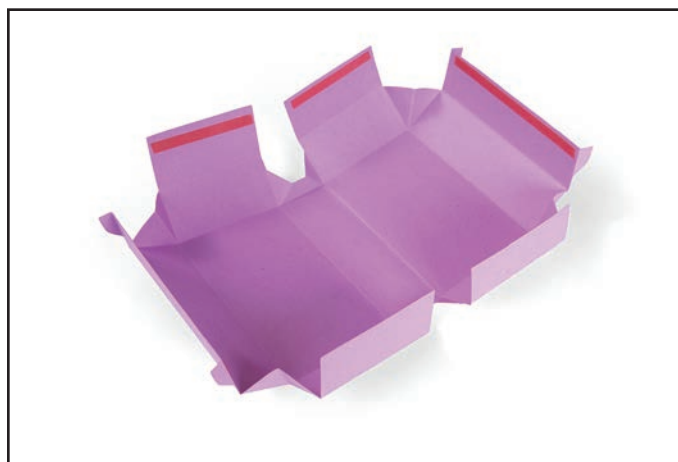


658488 Sizzix® Bigz™ Pro Die - Box, Suitcase by Jen Long-Philipsen



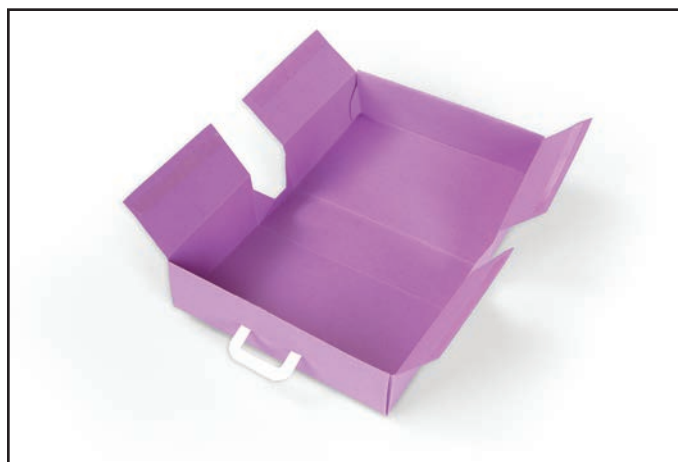
1. Die-cut material and apply adhesive as shown.



2. Fold all panels and tabs towards the center as shown.



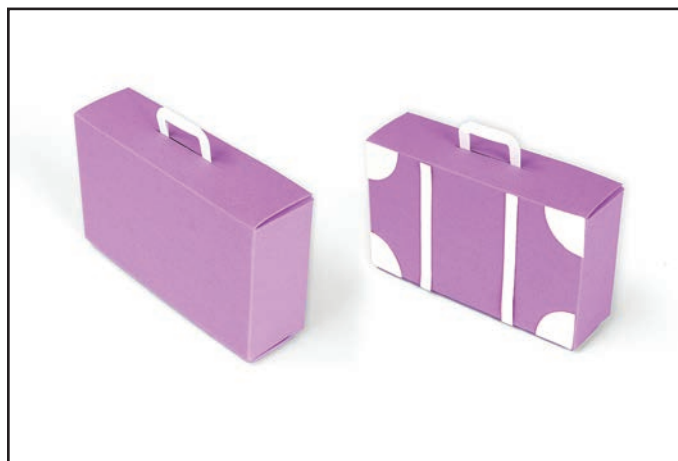
3. Fold the handle and insert it from the inside of the box to the outside. Adhere handle tabs in place.



4. Fold and adhere end panels as shown.



5. Fold sides in and adhere as shown.



6. Apply corner and strap pieces if desired.