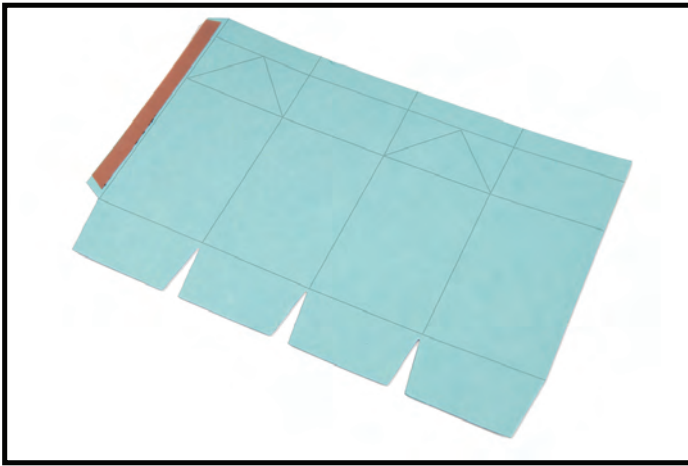
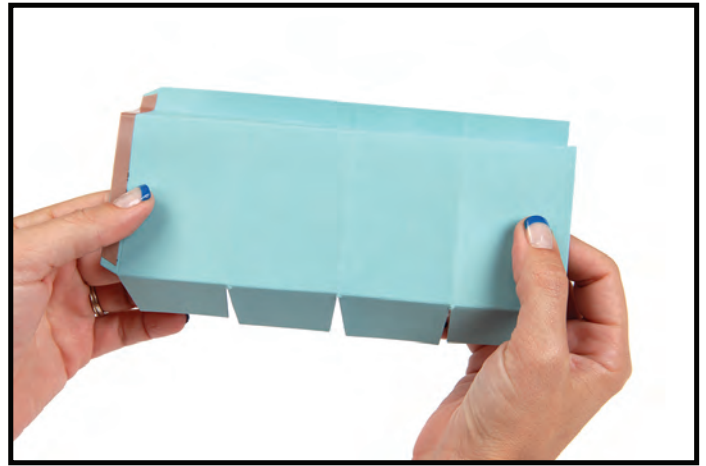


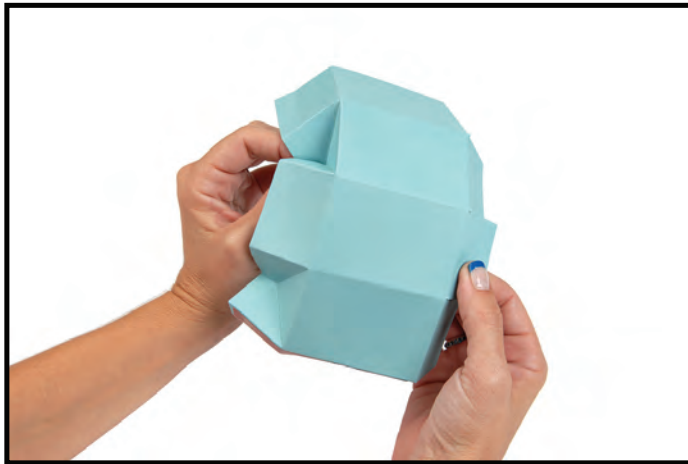
658822 Sizzix® Framelits™ Die – Box, Milk Carton



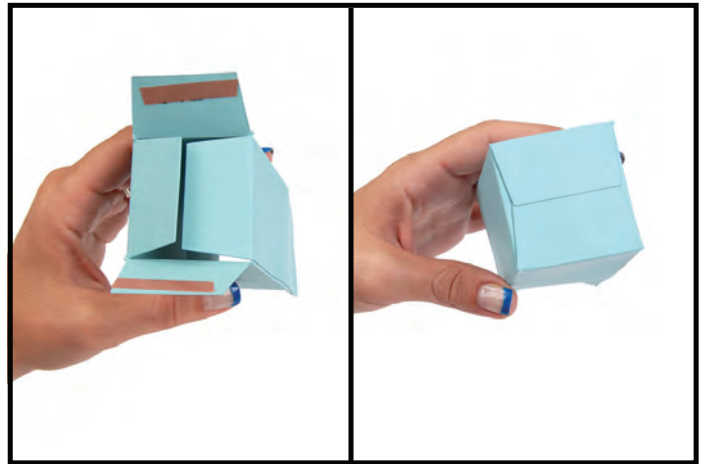
1. Die-cut from desired material and apply adhesive to the side tab.



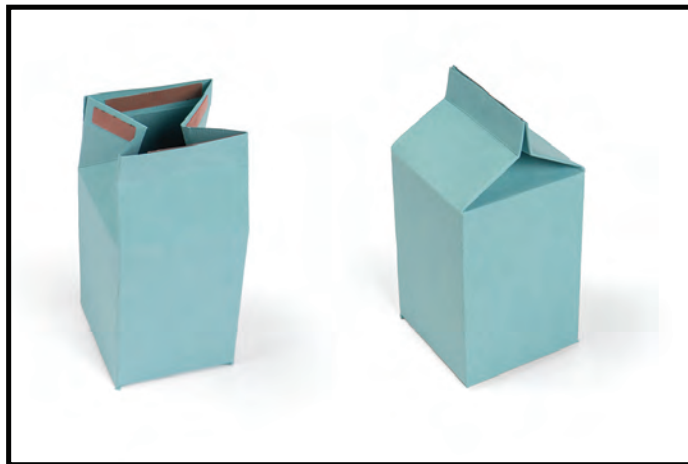
2. Pre-fold all of the horizontal folds as shown.



3. Prior to assembly, pinch and fold the triangular sections.



4. Assemble the Carton by adhering the long tab to the opposing side. Close Carton bottom and adhere the flaps in place as shown.



5. The top of the Carton can be sealed by using adhesive or with a staple. Embellish as desired.