

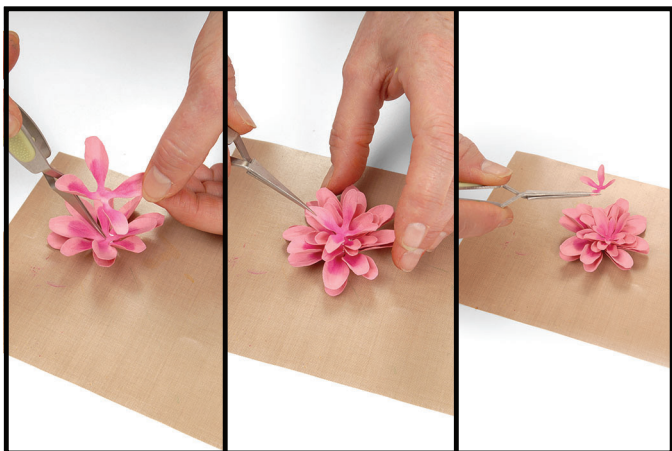
658859 Sizzix® Thinlits™ Die Set 6PK - Flower, Dahlia by Susan Tierney-Cockburn™



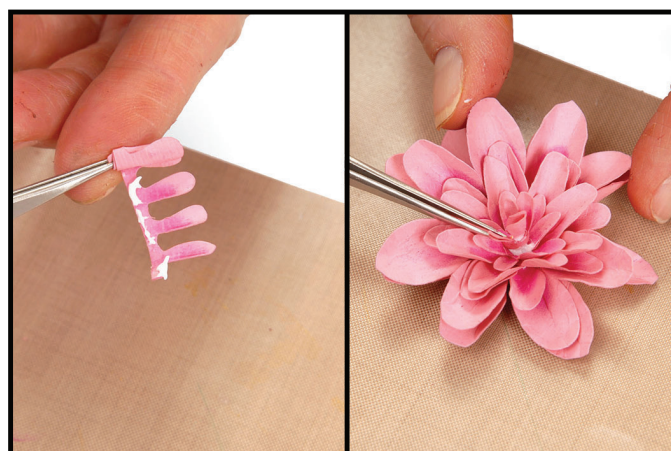
1. Die-cut large and medium flower shapes 4 times, small flower shape 2 times and the center petals once in your favorite color, plus 3-4 leaves in medium green cardstock.



2. Shade the flowers in a lighter shade using the PanPastel®, if desired.



3. Place all flowers on the molding pad to **shape**, using the loop tool, then place right-side-up on the leaf pad, to add some character **lines**. Place flower back on the molding pad and **stir** using the small ball stylus. Glue and stack the petals: large, medium, small - offsetting each layer as shown.



4. Place center petal on the molding pad and **shape**, using the small loop tool. **Roll** this shape up, using the tweezers, and apply a small amount of glue to the opposite end to secure. Place in the center of the flower as shown.



5. Place leaves face down on leaf pad and, using the leaf tool, add a **stem** line. Fold leaf and apply highlight to the front side using PanPastel®. Place leaf face up on leaf pad and, with the leaf tool, add **veins** projecting out from the stem line. **Pinch** and **bend** each leaf.



6. Apply adhesive and insert leaves below the flower as shown.