

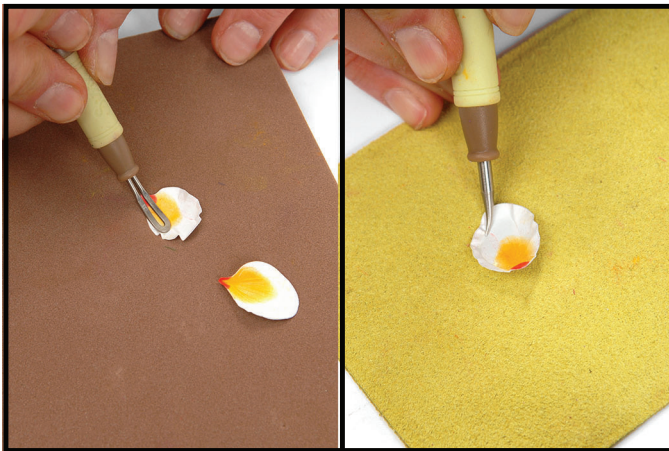
658864 Sizzix® Thinlits™ Die Set 9PK - Flower, Plumeria by Susan Tierney-Cockburn™



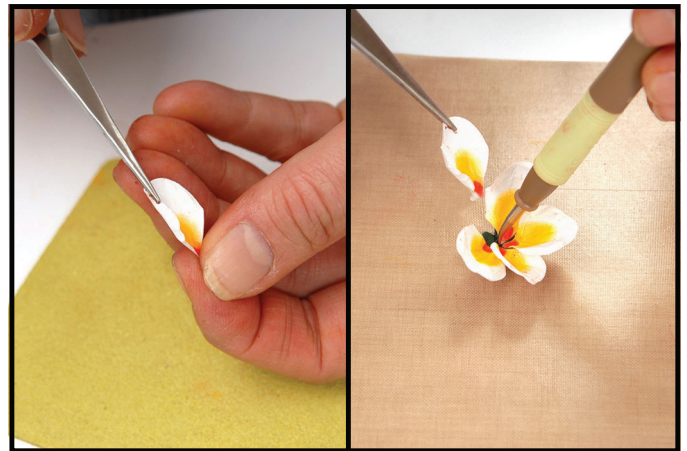
1. Die-cut petals in white, cream or pink, calyx and leaves in dark green cardstock.



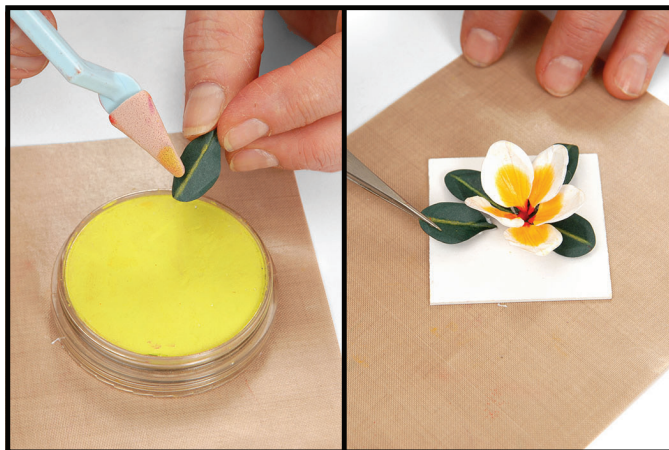
2. Shade the petals with PanPastel® bright yellow.



3. Place petals on the molding pad and **shape**. Using the loop tool, place on the leaf pad and draw a line around the outer left-side of each petal.



4. Use tweezers to **pinch** and **bend** each petal. Place calyx on molding pad and **stir** using the medium ball stylus. Place calyx on the non-stick sheet. Apply glue to the stem end of petal and attach to one of the calyx projections. Repeat with remaining petals. Set flower in the Flower Pot to dry.



5. Place the leaves right-side down on the leaf pad, and use the leaf tool to add a **stem** line down the center. Turn over and bend the leaf in half, then add highlight along the stem line with PanPastel®. Place the leaf right-side up on the leaf pad and add **veins**. **Pinch** and **bend** the leaf, then apply adhesive to the stem end and adhere beneath flower.