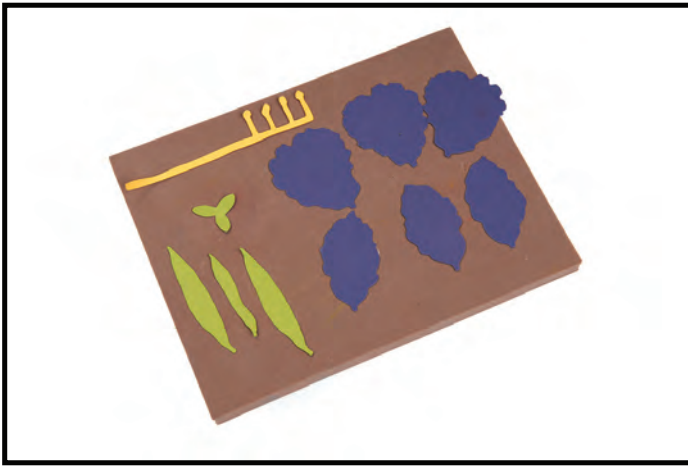


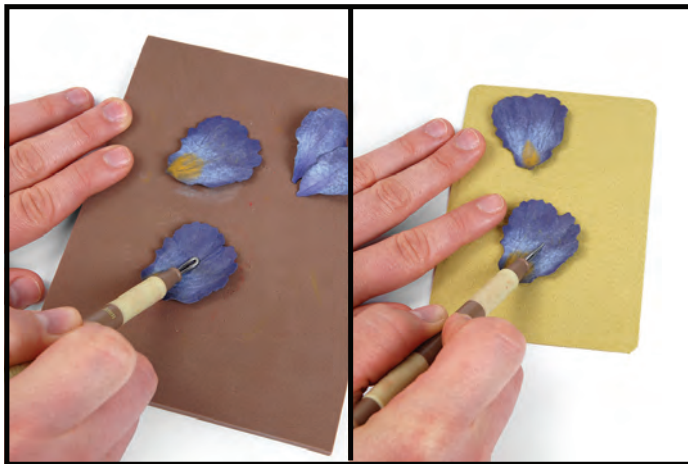
# 659256 Sizzix® Thinlits™ Die - Flower, Bearded Iris by Susan Tierney-Cockburn



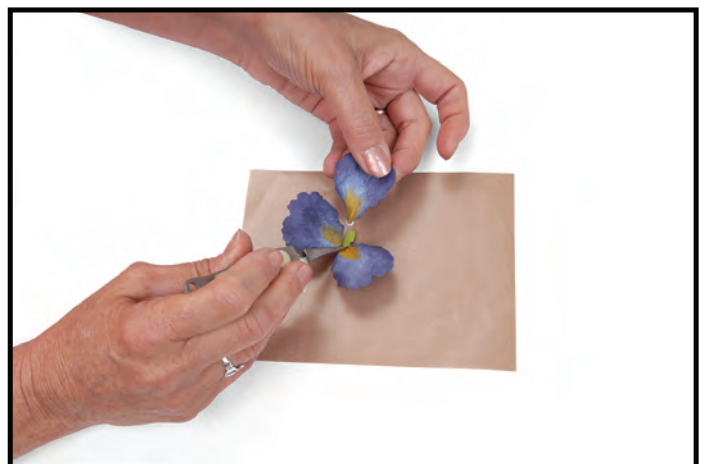
1. Die-cut three large petals and three small petals from purple, pink, orange or white cardstock. Die-cut three or four leaves from medium to bright green cardstock and the calyx from medium green cardstock. Die-cut the stamen from light to medium yellow cardstock.



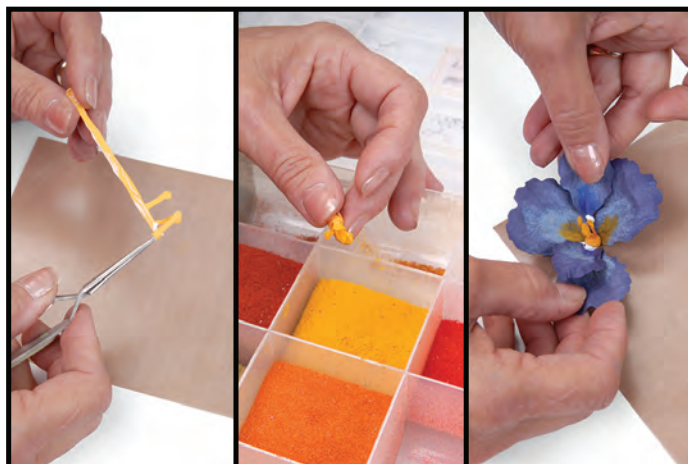
2. Use PanPastel™ to add color to the petals as shown, or reference gardening magazines for inspiration.



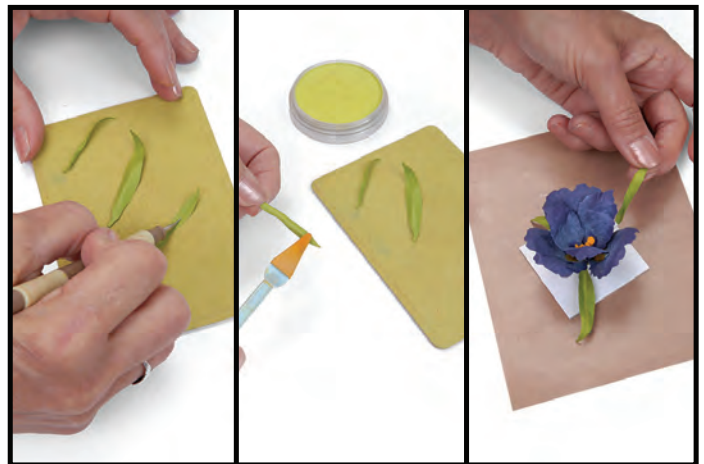
3. Place petals on the Molding Pad and use the 3mm Loop Tool to **shape**. Use Leaf Tool and Leaf Pad to add character **lines** to the base of each petal. Using tweezers, **pinch** and **bend** each petal.



4. Place calyx on the Molding Pad and **cup** using the 5mm Ball Stylus. Dip and drag the three large petals in glue and adhere one to each projection of the calyx. Let this shape set in the Flower Pot while working on the other petals.



5. Apply glue to the bottom edge of the stamen, grasp the first projection with tweezers and **roll**. The long strip will form a thick band around the base of the stamen. Lightly dip the tips into glue, then into Woodland Scenics™ Pollen. Adhere the stamen to the center of the Flower and glue the remaining three petals to the base of the stamen.



6. **Stem, pinch and bend** leaves. Back fold leaves along the stem line and apply PanPastel Bright Green to the raised fold. Reverse the fold of the leaf so that highlighted stem line is the inner fold. Dip and drag stem in glue and place beneath the Flower.