

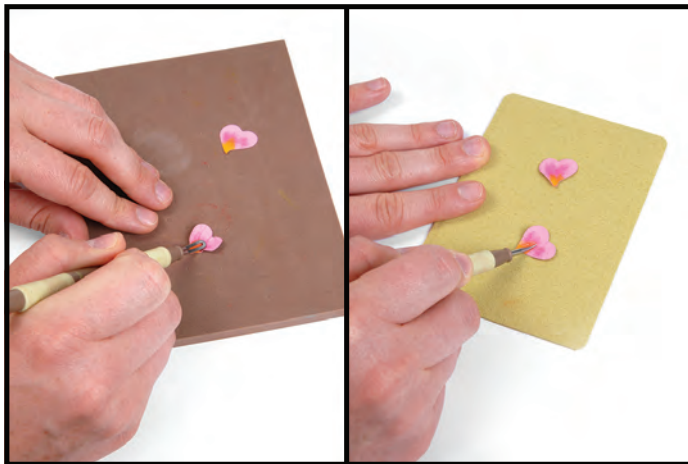
659263 Sizzix® Thinlits™ Die - Flower, Primrose by Susan Tierney-Cockburn



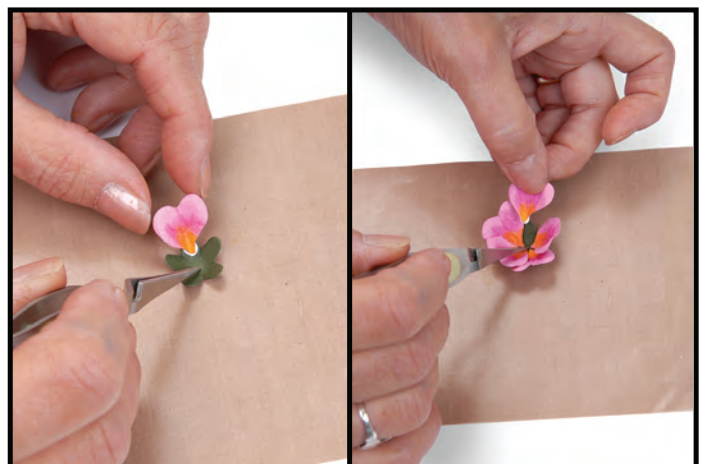
1. Die-cut petals from pink, orange, red, blue or purple cardstock, the calyx (flower base) and leaves (3-4) from dark green and the stamen from bright to medium yellow cardstock.



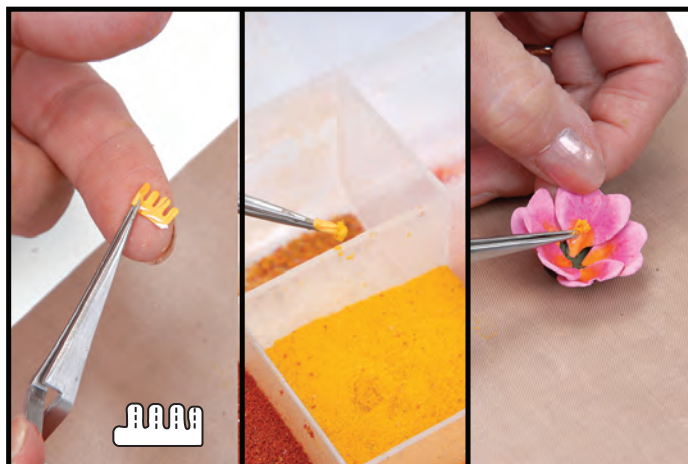
2. Place each petal on the Non-Stick Pad and use PanPastel™ colors in contrasting shades (reference gardening magazines for inspiration).



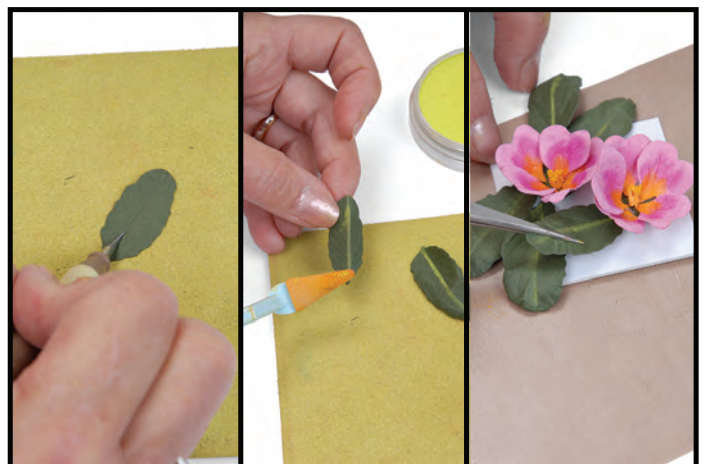
3. Place petals on the Molding Pad and use the 3mm Loop Tool to **shape**. Use the Leaf Tool and Leaf Pad to add character **lines**. Using tweezers, **pinch** the stem ends and **bend** to the tips of the petals. Place the calyx on the Molding Pad and **stir**, using the 5mm Ball Stylus.



4. Dip and drag each petal in glue and adhere to each projection on the calyx.



5. Using scissors, cut each projection of the stamen in half. Apply glue to the bottom edge of the stamen, grasp the tab end with tweezers and **roll**. Fan out the stamen and lightly dip ends into glue, then into Woodland Scenics™ Pollen. Dip bottom of stamen into glue and adhere to the center of the Flower.



6. **Stem, vein, pinch and bend** leaves. Back fold leaves along the stem line and apply PanPastel Bright Green to the raised fold. Reverse the fold of the leaf so that highlighted stem line is the inner fold. Dip and drag stem in glue and place beneath the Flower.