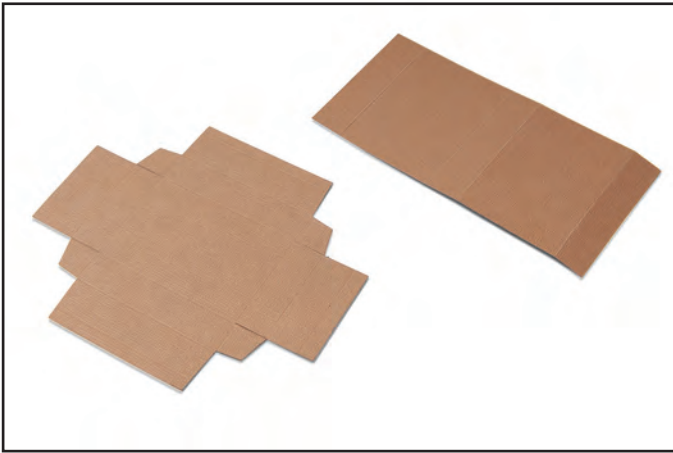
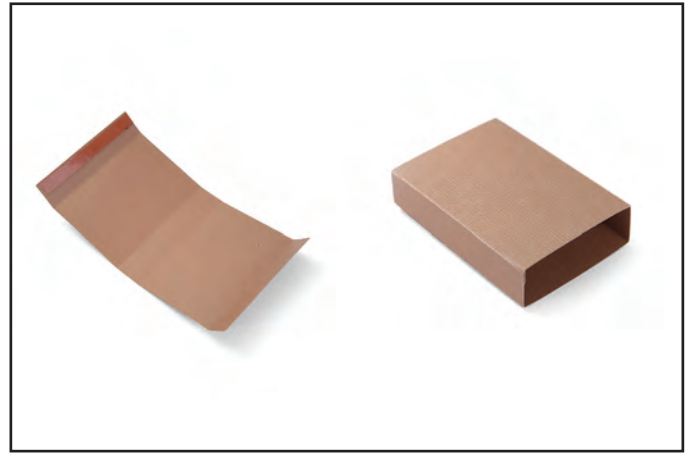


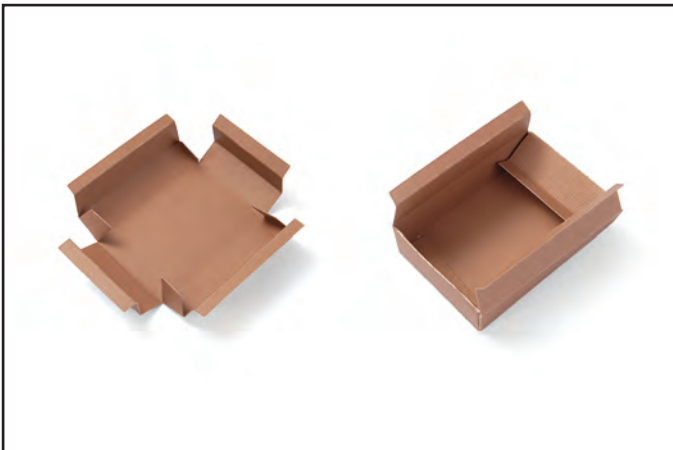
659447 Sizzix® Bigz L Movers & Shapers Matchbox by Tim Holtz®



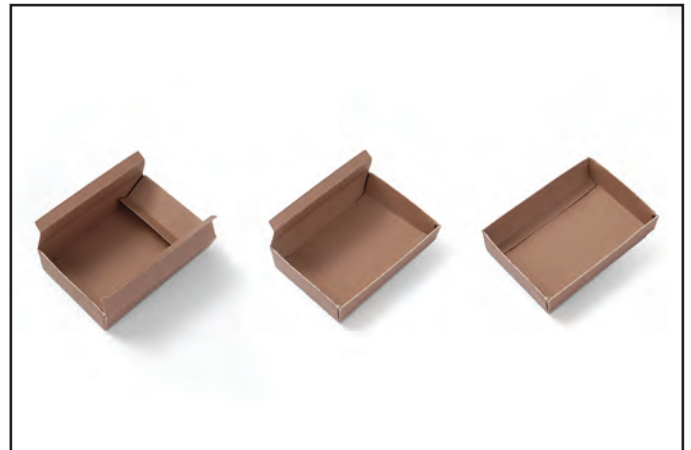
1. Die-cut pieces from chosen material.



2. Place adhesive on one of the end tabs of what will be the inside of the sleeve.



3. Create the drawer by folding in the corner tabs and accordion-folding all of the side flaps. Fold the end tabs over the corner tabs, as shown.



4. Finish the drawer by folding the side tabs into the box and locking the end tabs into place. Adhesive may be used, but is not necessary.



5. Slide the drawer into the sleeve and embellish as desired.