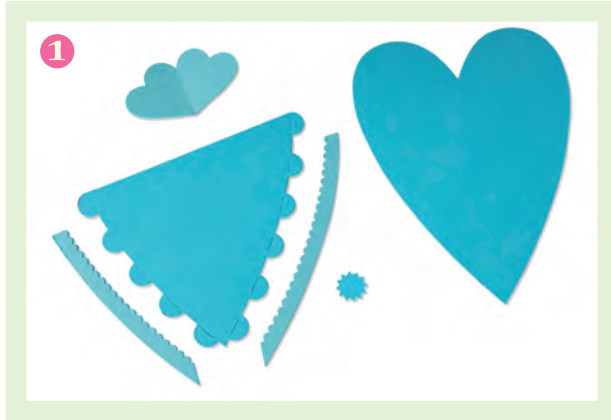


659624 Sizzix® Bigz™ Die - Heart Pocket by Brenda Walton™



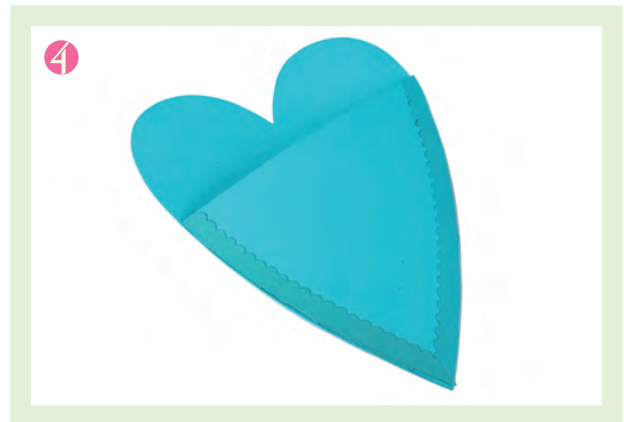
1. Die-cut from desired material



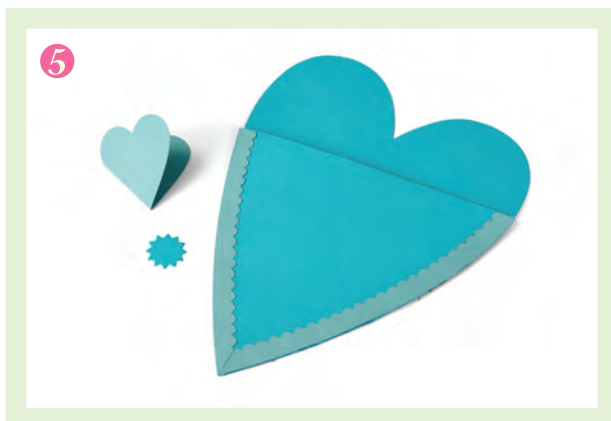
2. The small heart is designed to be used with a single fold technique and will create a Heart shaped card. Align the folded edge of the paper with the open ends of the blade as shown. After running the die through the machine, you will have mirror images connected at the fold.



3. To create the pocket, fold the tabs back and apply adhesive to the inside of the tabs. Align the pocket with the heart and press the tabs in place. The tabs will then be visible from the back side of the heart.



4. Adhere the scalloped trim to the front of the pocket.



5. Embellish as desired

