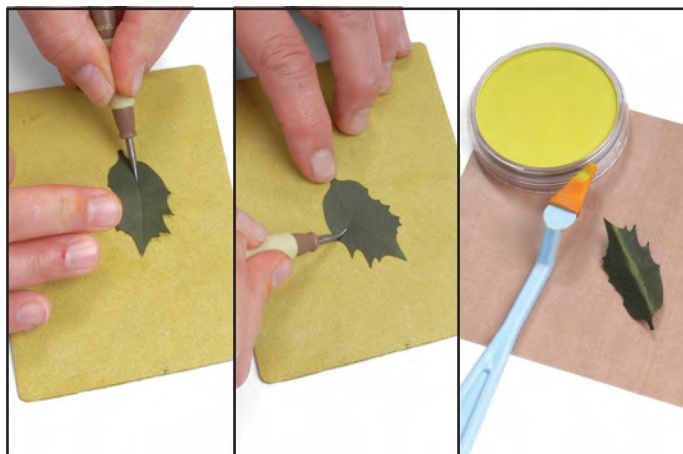


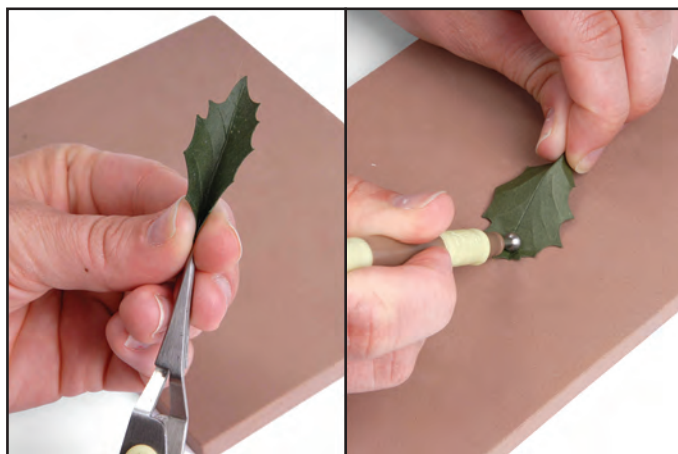
1. Die-cut leaves from dark green cardstock.



2. To create the waxy look of the Leaf, apply petroleum jelly to the side of the Leaf that will be visible, and let it absorb and dry.



3. Place the Leaf on the Leaf Pad, right side down, and **stem**. Turn the Leaf over and fold along the stem line. Apply a highlight of PanPastel® Bright Yellow Green along the fold.



4. Place the Leaf back on the Leaf Pad, right side up, and **vein**. **Pinch** and **bend** by placing the Leaf face down on the Molding Pad and working the medium ball stylus along the front edge.



5. Create berries by using an air-dry clay (Makins®), Viva Decor Paper Pen Red, or by rolling up a 1" to 1 1/2" square of red tissue paper and glue into a ball.



6. Set berries in the center of the Leaf clusters.