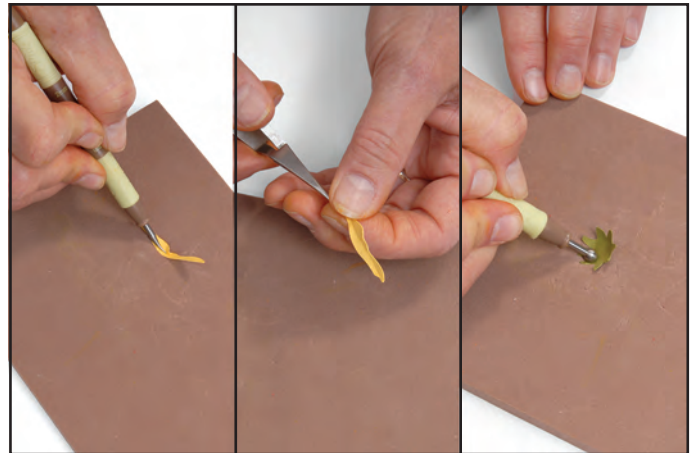
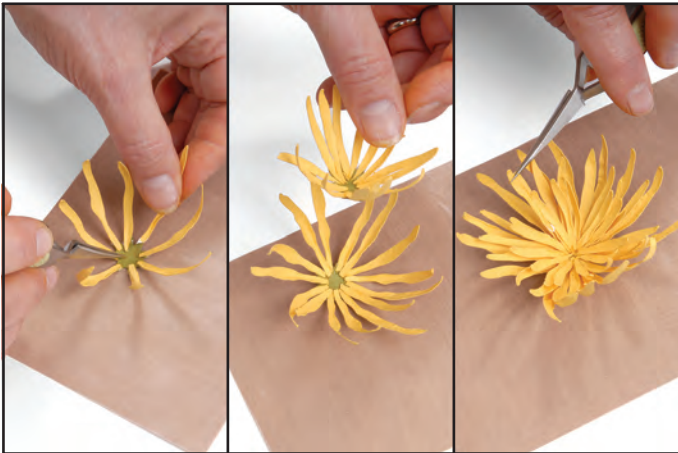


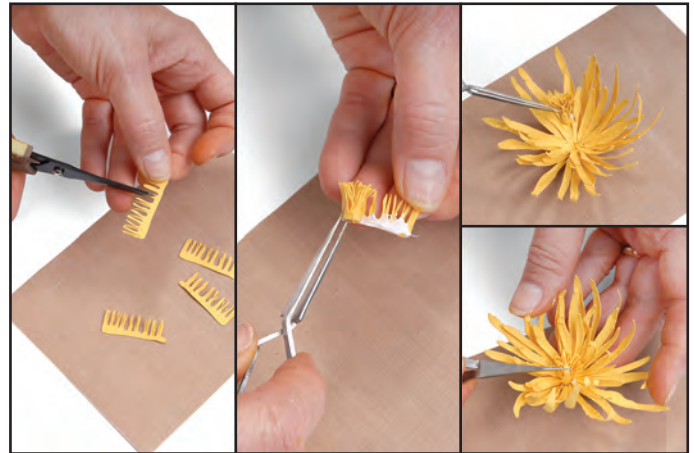
1. Die-cut 16 large petals, 16 medium petals, 16 small petals and 4 center petals from yellow, white, pink or orange cardstock. Die-cut 2 calyxes and 3 leaves from medium to dark green cardstock.



2. Shade petals at the stem end with PanPastel™ on the Non-stick Pad. **Shape, pinch and bend** petals. **Stir** calyx on the Molding Pad.



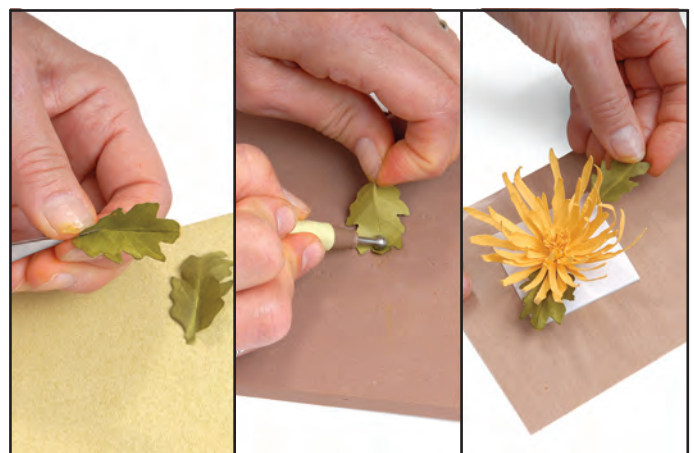
3. Place calyx on the Non-stick Pad, dip stem ends of large petals into glue and place one petal on each of the eight projections. Repeat with the remaining eight petals, alternating between the first layer. On the other calyx, dip stem ends of medium petals and arrange in a similar manner. With a toothpick, apply glue to the underside of this calyx and adhere to the top of the calyx with the large petals. Add small petals, alternating between the medium petals.



4. Cut center petal filaments in half with scissors. Use a toothpick to apply glue to the band, then clasp with tweezers and **roll**. Repeat with the other three center petals, building on each. Dip the bottom of the center petals into glue and set in place. Bend the small petals over the center petals.



5. Place leaf on the Leaf Pad, right side down, and **stem**. Turn leaf over and fold in half. Apply a highlight of PanPastel™ Bright Yellow Green down the stem line. Fold leaf in the opposite direction, then **pinch and bend**. Highlight veins of leaves with PanPastel.



6. Pinch and bend leaf. Dip stem end of leaf into the glue and set in place under the Flower.