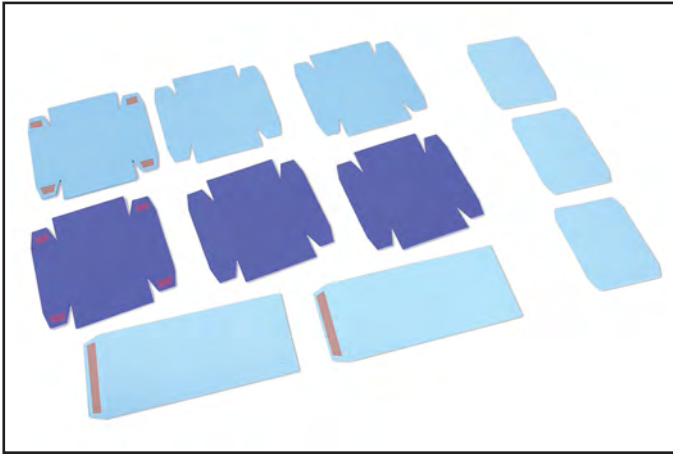
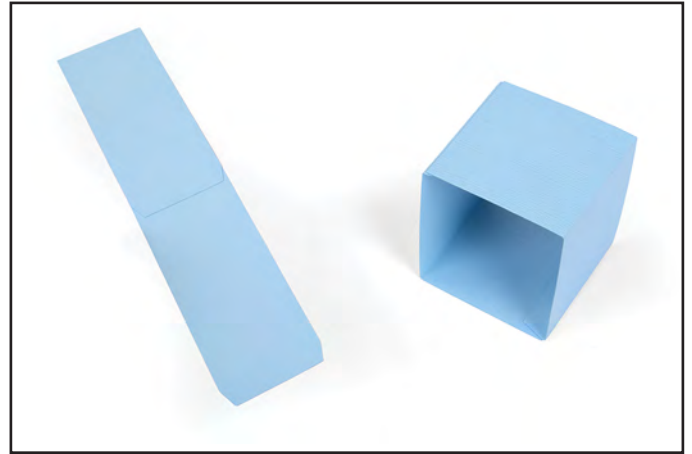




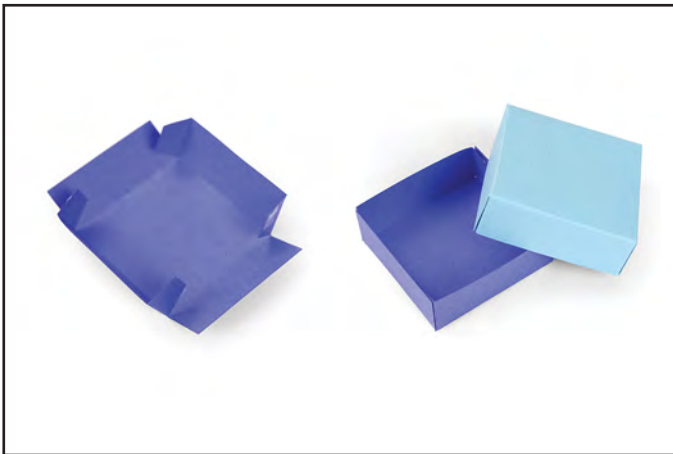
# 660312 Sizzix® Bigz™ XL Die - Box with Drawer by French General



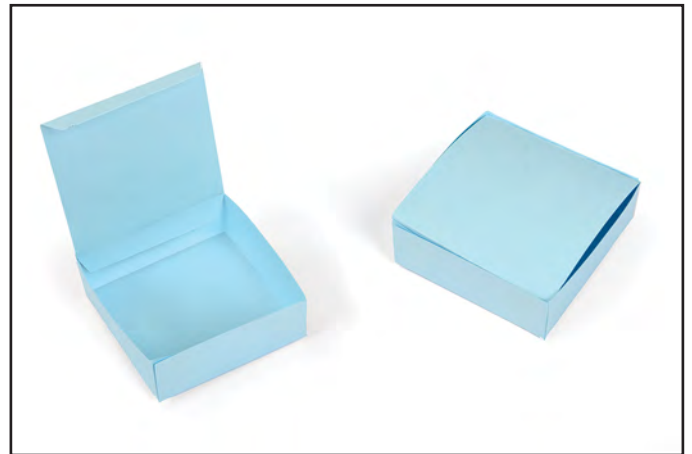
1. Die-cut three lids, three bottoms and two Drawer holder pieces. If you wish to have a flap-type lid (see figure 4), cut out three Drawer flaps instead of the full tops.



2. Adhere the two Drawer holder pieces together, then attach the remaining end tab to the opposing side as shown.



3. Fold all of the crease of the tops and bottoms in the same direction. Adhere the side tabs to their corresponding sides.



4. If you do not want a two-part box, build the bottom as described in figure 3. Apply adhesive to one of the tabs on the flap lid and adhere to the inside of the box as shown.



5. Three Drawers can be held within the Drawer holder.