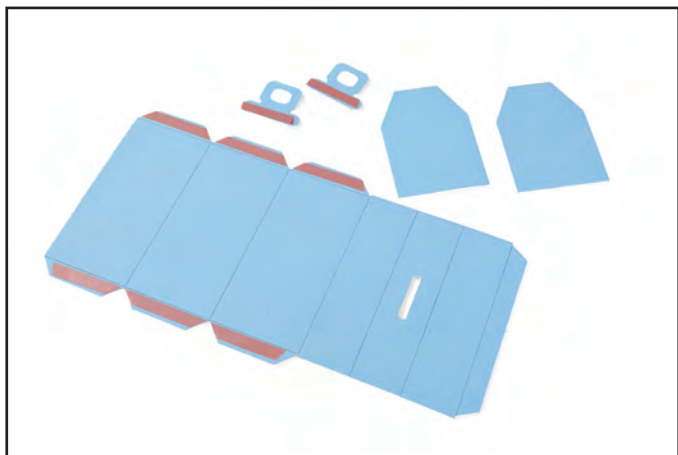




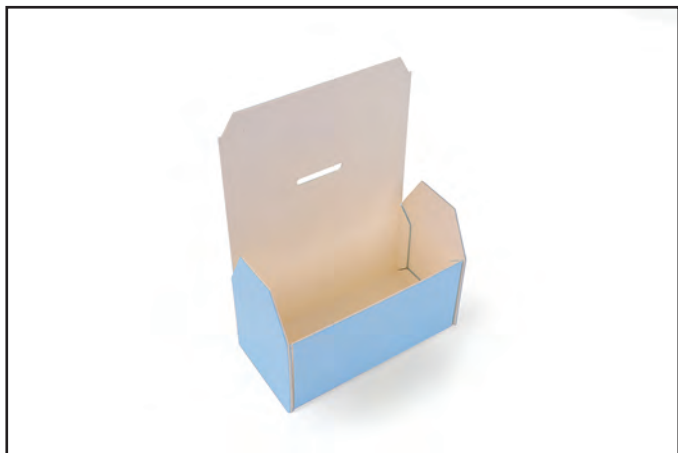
660331 Sizzix® ScoreBoards™ XL Die - Box, Toolbox by Eileen Hull



1. Die-cut from matboard and apply adhesive as shown.



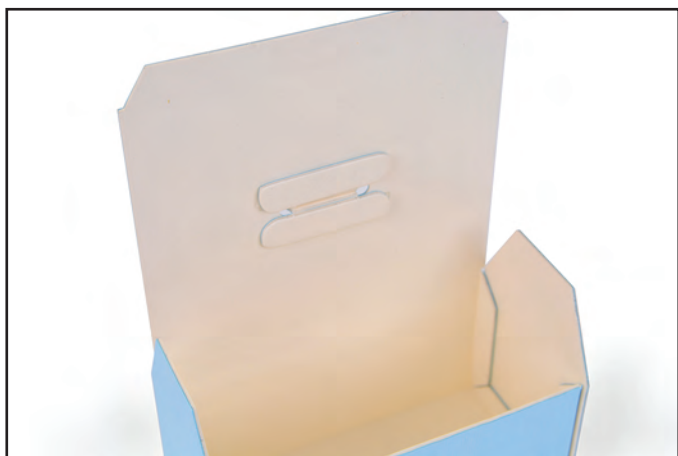
2. Adhere the Square ends of the side pieces to the tabs of the bottom piece.



3. Adhere the tabs of the front and the back of the Box to the side pieces.



4. Insert the handle pieces into the top of the Box as shown.



5. Adhere the tabs of the handles to the inside of the Box top.



6. Embellish as desired.