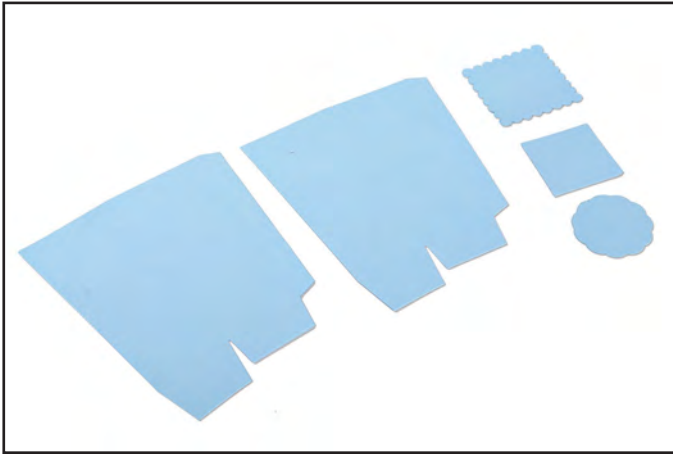
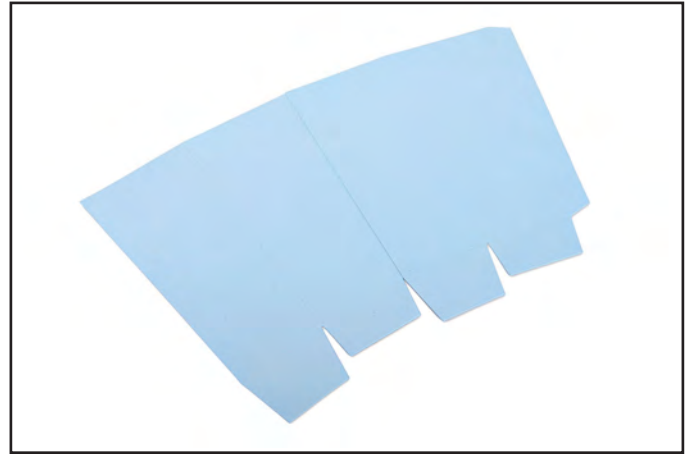




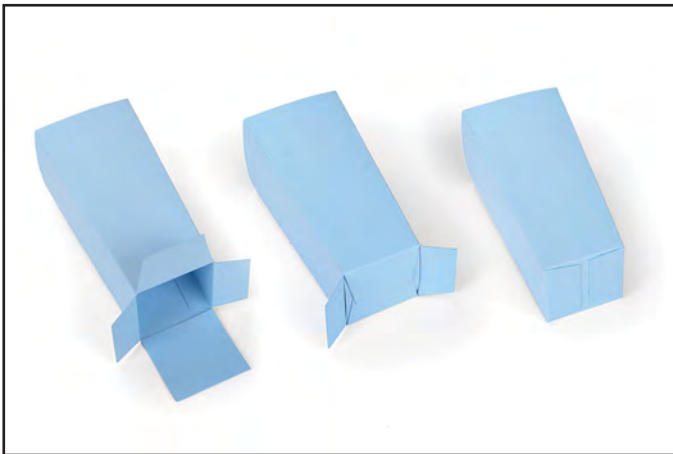
661089 Sizzix® Bigz™ Die - French Favor Box by Brenda Walton™



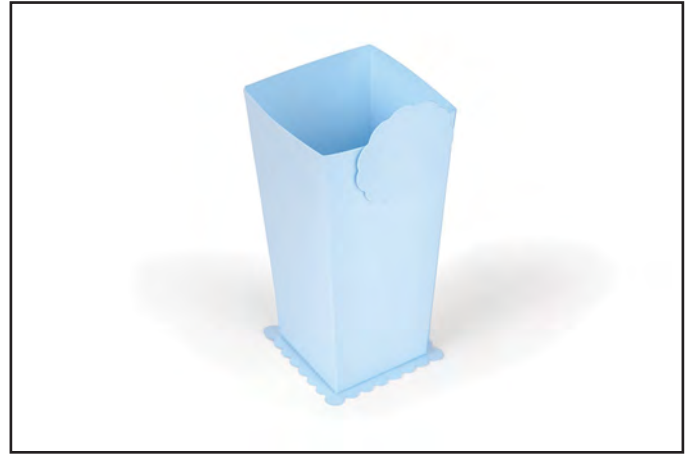
1. Die-cut from desired material.



2. Adhere the two body pieces together along the long tab.



3. Adhere the remaining long tab to the opposing edge. Adhere the square piece to one of the large flaps as shown. Adhere the remaining large flap in place. Adhere the two short flaps in place.



4. Adhere the box to the scalloped base and embellish as desired.