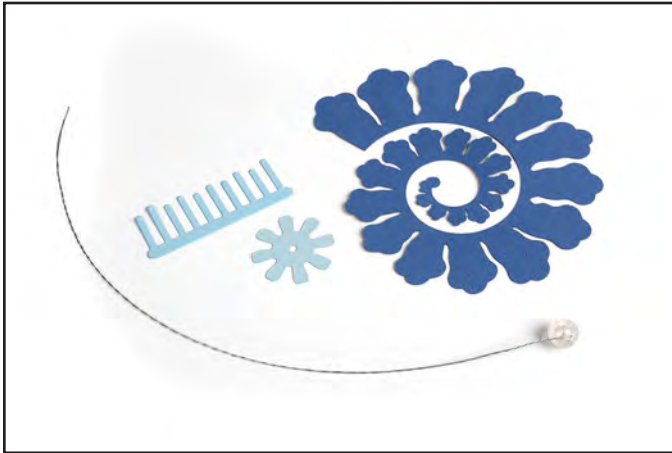
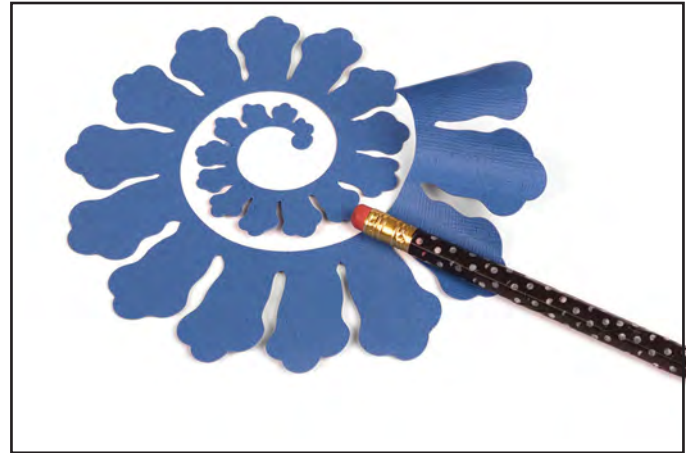




661107 Sizzix® Thinlits™ Die - Flower, Rolled by Eileen Hull®



1. Die-cut all parts from cardstock. Use Sizzix® Twist and Style™ Tool to create the stem and flower center by threading wire through the end of the button and twisting the two ends together. (Optional)



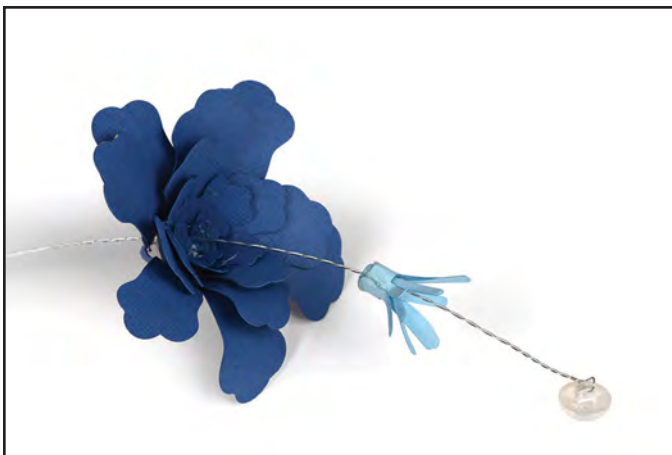
2. Shape the leaves by rolling each petal around a dowel or pencil.



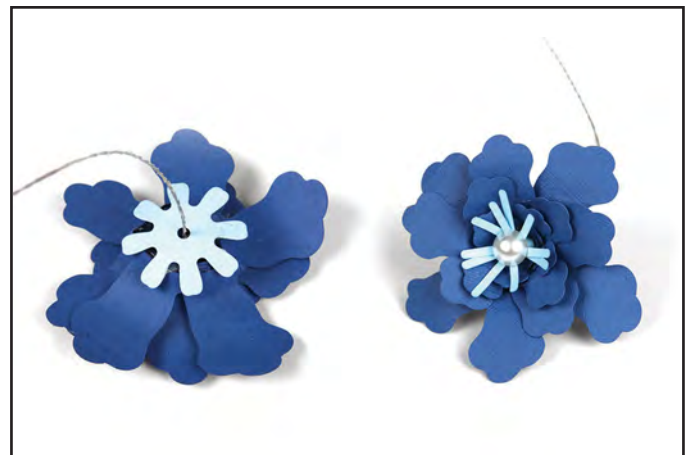
3. Start the flower in the center and adhere the spiral at the bottom edge.



4. Add shape and volume to the outer petals with a dowel or pencil.



5. Roll the stamen and adhere in place. Or run the wire stem through the stamen and the flower. Glue the stamen in place.



6. Adhere the calyx to the base of the flower.