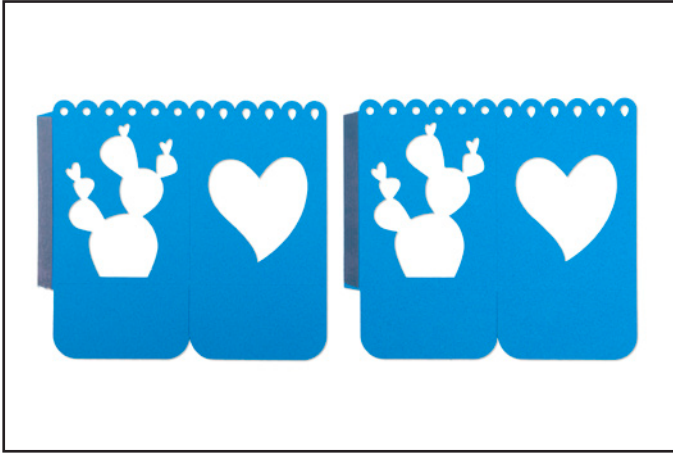
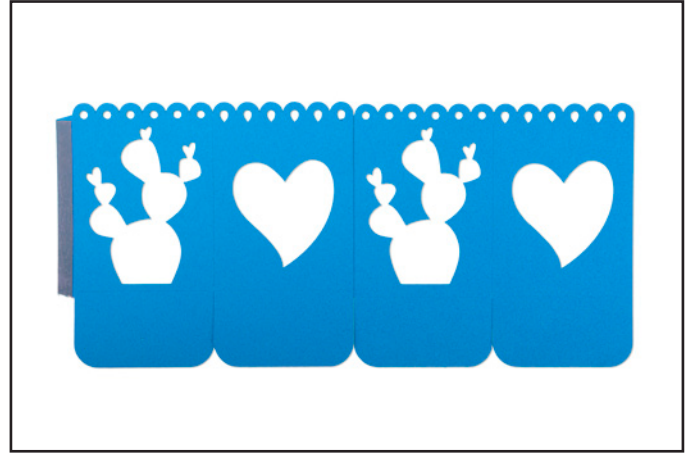




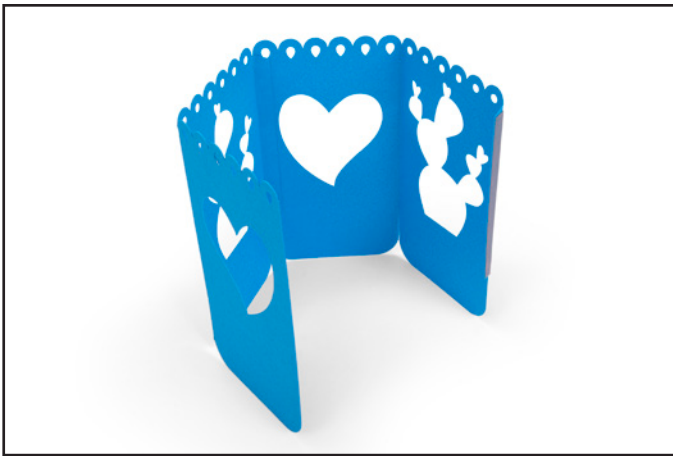
# 663147 Sizzix® Bigz™ Die - Tealight/Votive Lantern by Crafty Chica™



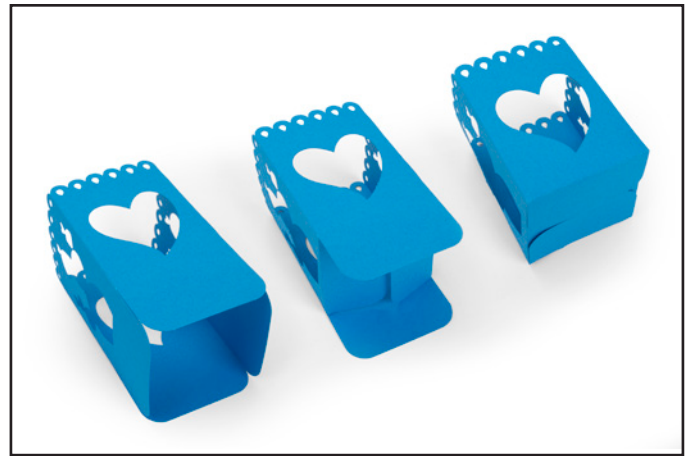
1. Die-cut out of desired material, and apply adhesive as shown.



2. Adhere the side panel pieces together as shown. If you want to cover the inside of the cutout shapes with patterned paper or vellum, do so at this step. Paper layered on the panels should be attached to the opposite side shown in the image.



3. Fold the vertical creases, and adhere the loose tab to the open edge of the adjacent set of panels.



4. Seal the bottom by folding a pair of opposite flaps inward. Fold the remaining set of flaps inward and adhere in place.



5. Embellish as desired.