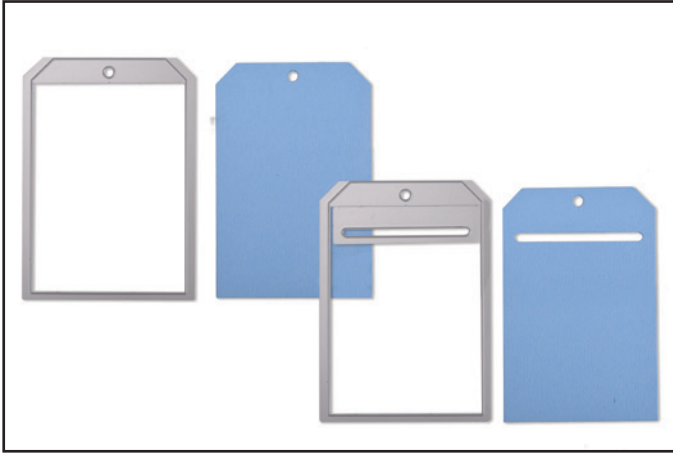
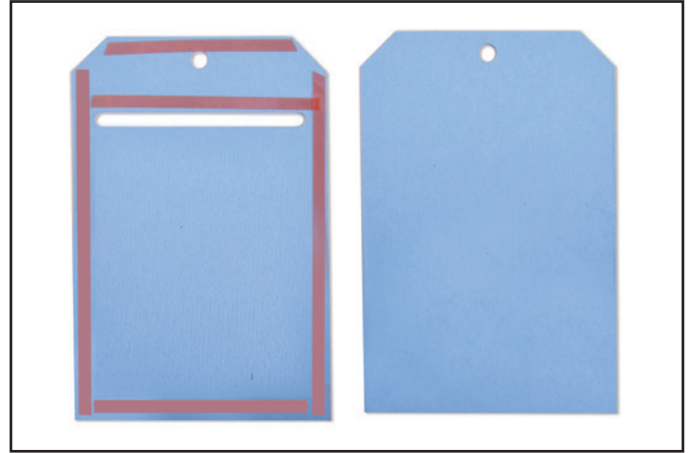




663177 Sizzix® Framelits™ Die Set w/Stamps - Tag Pocket w/Phrases by Lynda Kanase



1. Die-cut out of desired material. The back is die-cut without an insert. The front is die-cut with the slot insert.



2. Apply adhesive on the inside of the front panel as shown.



3. Adhere the front panel to the back panel, and embellish as desired.