

Box, Heart

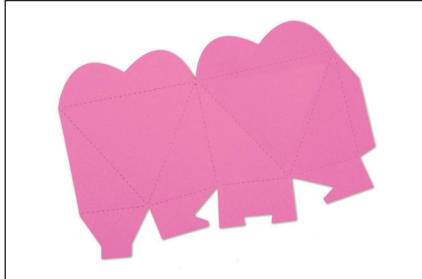


Figure A



Figure B



Figure C

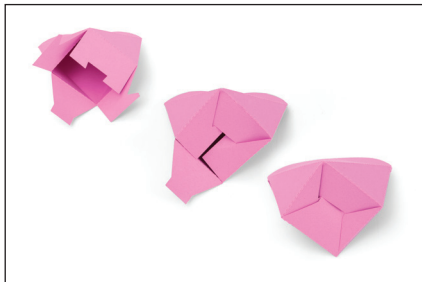


Figure D



Figure E



Figure F

The teacher will die-cut the materials for student use prior to the lesson.

1. Die-cut the box out of colored paper or cardstock (Figure A).
2. Fold along all of the perforations. All folds are mountain folds except for the two at the top of the heart, which are valley folds (Figure B).
3. Place adhesive on the side tab, and attach it to the other side of the box by folding the box in half (Figure C). If you want to add details like a different color heart (red with white stripes, Figure F), use the perforations as a guide, and attach it on top of the pink heart while the box is still flat.
4. To close the bottom of the box, first fold in the U-shaped section, then fold the two side sections and finally tuck the remaining section into the cutout in the U (Figures D & E).
5. The two curves at the top of the heart remain open to allow entry into the box (Figure F).

Box, Heart A11160